

Introduction to CUTOUT 8 professional

Software manual

Impressum

This User Manual is protected under copyright.

All rights to the reprinting and reproduction of this manual, in its original or translated form, are reserved. Specific portions of this work may neither be reproduced—whether through the process of photocopying, scanning and printing to microfilm, or any other—nor copied, altered or duplicated in any form for further purposes, including the use in teaching programs or lessons, without the company's express written consent to do so otherwise.

Disclaimer: The company takes no responsibility for damages that occur while using this software, whether that be in the form of personal, material or capital damages directly or indirectly linked to the use of the Software. Additionally, the company assumes no liability for potential technical errors or for the correctness of the provided information.

Further References: Microsoft, MS and MS-DOS are registered trademarks and Windows is a label of the Microsoft Corporation in the USA and other countries.

© 2018 Franzis Verlag, Haar/München

Innovations, errors and misprints excepted

Content

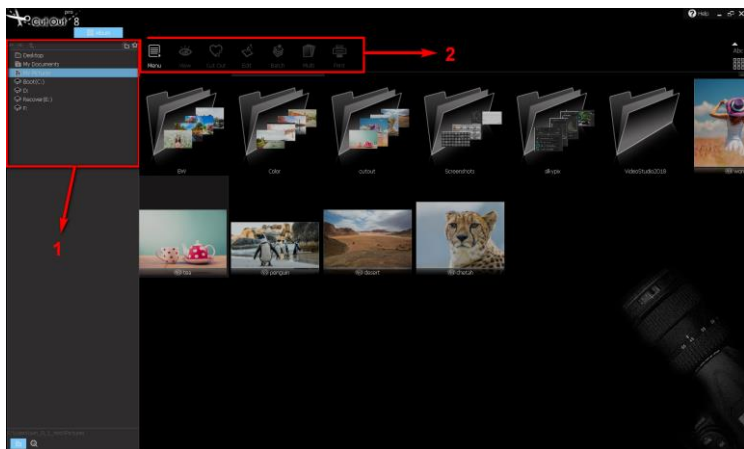
1. Introduction	6
1.1 New in CutOut 8 professional	6
1.2 Album Mode	9
2. Quick Introduction into Object Cropping	10
2.1 Inside/Outside Edge Matting	12
2.2 Chromakey Matting	19
2.3 Stroke based Matting	24
3. Editing Cropping Results	30
3.1 Editing Inside/Outside Edge Matting Results	30
3.2 Editing Chromakey Matting Results	33
4. Optimizing Results using Matting Tools	35
4.1 Chromakey Matting Optimization	35
4.1.1 Settings and Parameters	35
4.1.2 Matting Tools	42
4.1.3 Allocating Regions to the Foreground/Background – Polygon Tool	43
4.1.4 Batch Processing	52
4.2 Inside/Outside Edge Matting and Stroke based Matting Optimization	53
4.2.1 Settings and Parameters	53
4.2.4 Matting Tools	60
4.2.5 Allocating Regions to the Foreground/Background – Polygon Tool	61

4.2.2 Cropping Intermediate Areas of an Object using the Edge Tool	69
4.2.3 Inject Tool for Detail Enhancement	72
4.3 Additional Tips for Cropping Complicated Objects	75
5. Digital Matting: Good to Know	78
5.1 Matting technologies in general	79
5.2 Chromakey Matting	80
5.3 Inside/Outside Edge Matting	80
6. The Post-Matting Menu	83
6.1 Changing the Background Image	85
6.2 Background Blur	90
6.3 Duplicate to Layer	94
6.4 Split Layer and Delete Background	94
7. Edit images	95
7.1 Editing Mode – Overview	97
7.2 Editing Mode – Detailed View	99
7.2.1 Matting.....	99
7.2.2 Transform.....	100
7.2.3 Exposure.....	104
7.2.4 Color.....	113
7.2.5 Enhancement	116
7.3 Tip for the Edit Mode.....	133
7.3.1 Tools.....	133
7.3.2 Layers	135

7.3.3 Areas	138
7.3.4 History	138
8. Program Settings.....	139
9. Creating HDR and Stereoscopic Images	141
10. Opening and Saving Files.....	143
11. Plug-ins	146
Hotline/Support.....	147
Copyright	147

1. Introduction

CutOut 8 professional enables you to separate the foreground from the background in your photo and edit each individually. Doing this involves a couple steps. These include selecting regions of the photograph to be separated (digital matting) and edited. For example, this could entail the transfer of an object into a different photograph or the application of Image altering or enhancing effects.



1.1 New in CutOut 8 professional

CutOut 8 professional offers innovations in the field of digital matting, that significantly reduce the time consuming process of cutting out images.

Apply selection changes automatically

With the new function "Apply selection changes automatically" you no longer have to click on "Apply" manually. After you have cut out your desired object via the interior and exterior area, you can transfer it directly and switch to the post-matting menu.



Apply selection changes automatically

If the check mark is set, simply stop moving the mouse briefly and you will see the result. If you want to make changes, you can easily edit the image with the same tool.

Improvement of the preview mode

CutOut used to have five different preview modes in clipping mode. In this version, the "Show original image" mode will be a mixture of the 4 previous modes and the original. This means that if you move the mouse over the image, the original will be displayed. If you do not move the mouse, a fade-out effect automatically switches to the transparency view. This saves you having to switch between the two views several times.

Improved noise reduction and focus sharpening

The noise reduction algorithm has been improved and is now a bit slower, but provides much better results than before. The Post-Matting menu has also added another option for sharpening your photos. "Focus sharpen" works better than normal sharpening, but the differences are not always immediately apparent when changing the pixel layer.

Keyboard shortcuts for editing tools

Keyboard shortcuts have been added both for the tools in the "Inside/Outside edge matting" mode and for the tools in the "Chromakey matting" mode. This makes your workflow easier.

New algorithm for the stroke based matting

In the past, it took almost as long to cut out complicated objects based on their contours as it took to cut them out using the inside/outside selection. Now only about two strokes are needed for those photos which parts are well separated by their different colour. Simply move over the colours of the background and then over the colours of the foreground.



Shorter processing time

In **CutOut 8 professional**, the speed of separating transparent objects has been significantly optimized. With the help of improved algorithms, you can save a lot of time and let your creativity run free.

1.2 Album Mode

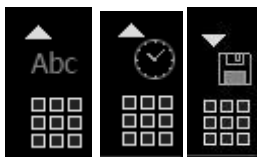
After opening **CutOut 8 professional** the Album Mode will appear. This is where you can manage your photos:

From region 1, choose the folder containing the photos you would like to mask or edit. The Search-tool, represented by magnifying glass and located at the bottom left of this region, enables you to search your entire computer for image files. In the Menu bar de-picted in region 2, all the most important **CutOut 8 professional**, functions are only a click away. These include the cropping functions **Chromakey Matting**, **Inside/Outside Matting** and the method of „**Stroke based Matting**“. Different forms of application of these methods will be introduced in the following chapter.

You can change the size of the images displayed here by holding down the CTRL key and scrolling the mouse wheel as you like.

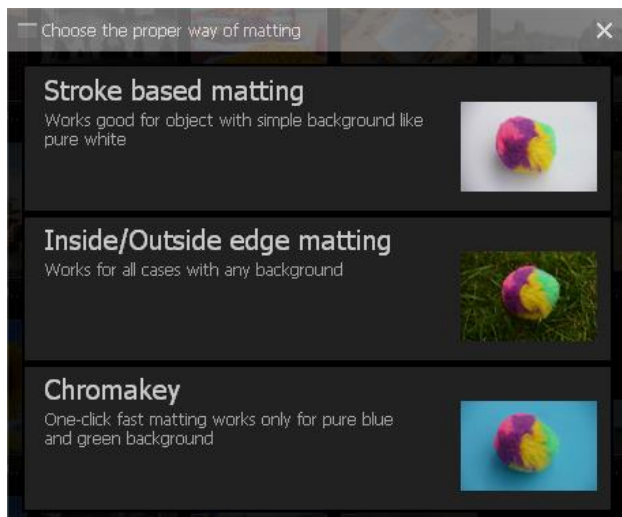
The Album-View provides a simple and effective way to execute **CutOut 8 professional** functions such as Overview, Sort, Rename, Copy, Paste, or to insert EXIF-Information. With one right click of the mouse on your photo, you can view all of the available functions in the Context Menu.

By clicking on the symbols in the upper right-hand corner of your screen, you can sort your photos according to specific criteria as well as adjust the icon size of your photos and folders:



2. Quick Introduction into Object Cropping

To crop an object and remove it from an image, first select the image from **album mode** you wish to work with, locate the crop-symbol in the menu above and choose a cropping method.



Which Cropping Method is the best one?

There is no right or wrong answer to this question. Choosing the most appropriate cropping method is 100% dependent on the material you are working with:

If you would like to crop an object not positioned against an evenly colored or evenly defined backdrop, as most often the case, then we recommend you choose **Inside/Outside Edge Matting**. With the help of the polygon tool, the inside region (the object being cropped) as well as the outside region (the background being cut out) can be selected, therefore enabling the object to be cropped.

If you would like to crop an object that does possess an evenly colored background (optimally blue or green) which is clearly discern-able from the

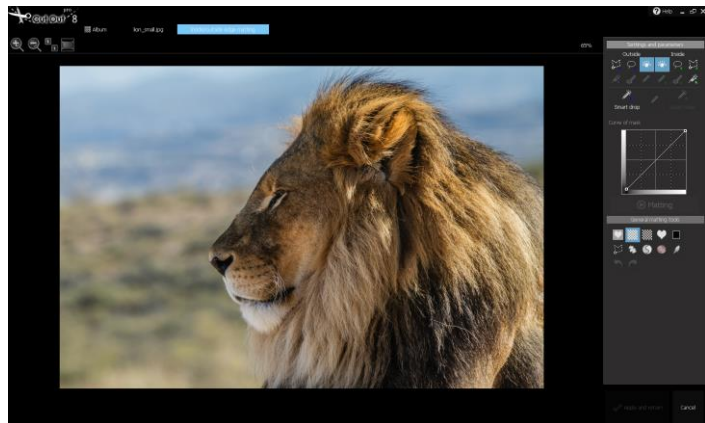
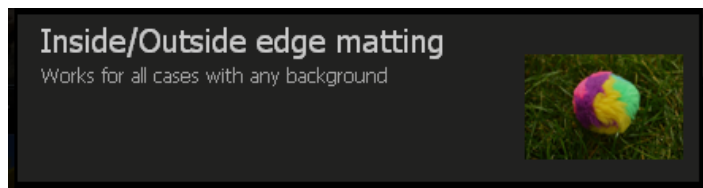
object, select the option **Chromakey Matting**. Well suited for use would be portraits with monotone backgrounds or landscape shots against a clear blue sky, for example, from which an object can be cropped.

The **Stroke based Matting** presents itself as an appropriate solution in cases in which none of the two previously mentioned methods seem to yield the best result, or when areas within the cropped object need to be quickly and precisely removed. When this method is chosen, the image is divided into an array of small puzzle pieces, or segments, all of which can be designated as either parts of the inside or outside region with just one mouse-click. Segmented cropping takes into account brightness, colors and contours to the same degree and yields a clear-cut result. Using these calculated segments when cropping can also be seen as the best editing method for those looking to crop objects from images taken in front of evenly colored backgrounds, not necessarily in a photo studio that is, such as items to be sold on eBay shot while lying on the kitchen table. In most cases, the lighting is not always the best to allow for an effective editing job by use of Chromakey-Matting alone. Implementing stroke based matting in such a situation will undoubtedly take your project the furthest. The effectiveness of this method can especially be seen when cropping an object situated against a white, grey or black backdrop. When working with rather large images containing many segments, the calculation may take a little longer.

2.1 Inside/Outside Edge Matting

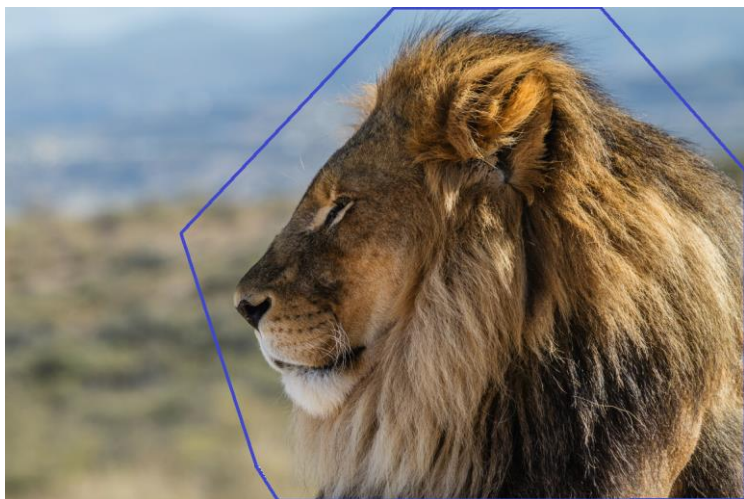
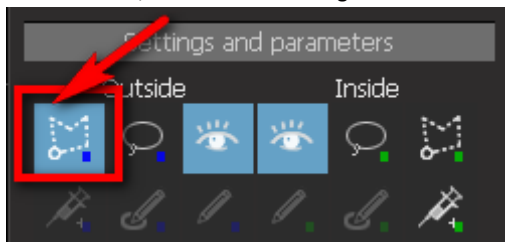
Method for multicolor backgrounds - or when colors from the background also repeat in the foreground object.

Inside/Outside Edge Matting is the right choice when it comes to cropping Objects from images, which **do not possess a strictly monotone background** or are similar in color to the background itself. Select the Image you wish to crop from album mode and choose the middle option from the following window.



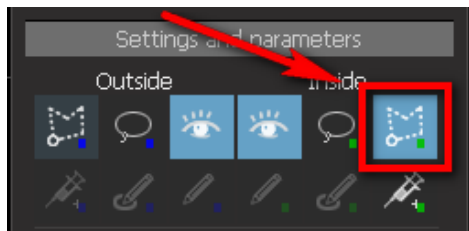
Now the selected image should be opened in the Inside/Outside Edge Matting Menu as follows:

Since the background coloration is in this case not only varied, but also quite similar to that of the lion's fur, Chromakey Matting would most likely not deliver the best possible result. For this reason, it makes the most sense to go about separating the object in the fore-ground from the background by hand. To get started, locate the Menu bar on the right side and select the polygon tool for the out-side selection from the upper left-hand corner. Now, draw an out-er-edge outline around the lion's entire head.

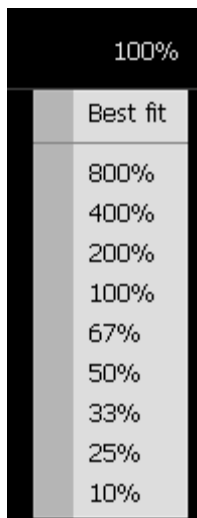


This does not need to be done with pinpoint precision. Most important when drawing the outline is making sure no point falls inside the object itself.

Now choose the polygon tool for the inside selection:



Step-by-Step, click and drag the outline along the inside border of the lion—that is, where the edge of his meets the background. Once again, this process does not need to be carried out 100% accurately. In order to be able to work more precisely, however, you can use the zoom function located on the left side of the menu bar:

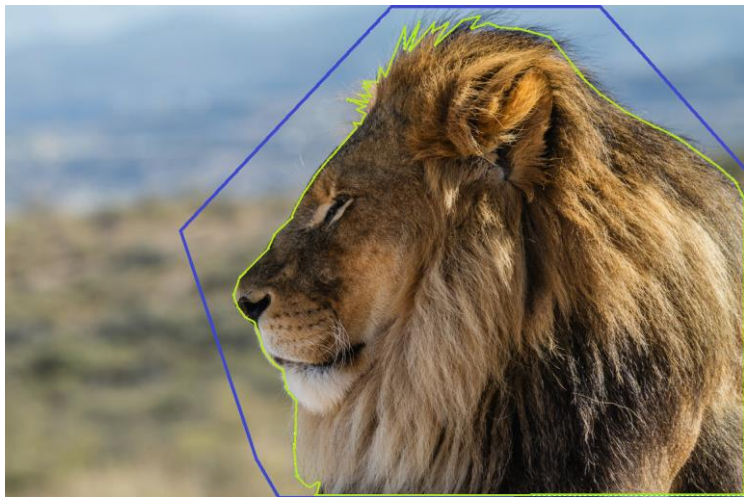


An alternative option is simply scrolling with your mouse wheel to adjust the zoom settings.

How do you take a step back?

If indeed you click on the wrong spot, one right click will enable you to undo and replace the last point made with the polygon tool.

Now finish up the outlining process so that your border spans the entirety of the object from the inside. Important is once again that the inside border does not contact the outside border area or the background itself. Finish up your selection with a double-click.



Now you should see a green inside line and a blue outside line.



With one click of the Matting button on the right side of the menu, the object is cropped according to the inside and outside edge selections made in the previous step.

If you have checked the "Apply selection changes automatically" box above, you can also click directly on "Apply".



Apply selection changes automatically

The result looks quite promising at first glance. The background has been removed and now appears transparent (gray/white grid-pattern):



If your result still doesn't look absolutely perfect, you can improve the cropped object by using an array of additional tools located in the Inside/Outside Edge Matting Menu. These will be described in further detail beginning in Chapter 3 ***Editing Cropping Results***.

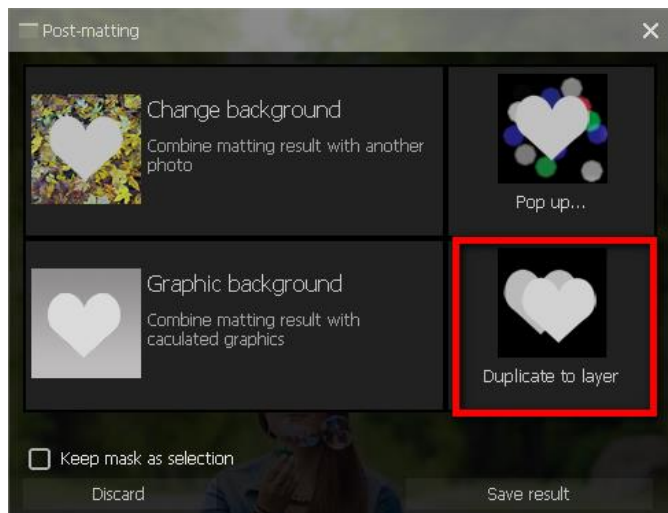
To create the displayed matting result as a separate layer in ***CutOut 8 professional*** and then edit or save it, click **Apply** in the Inside/Outside Matting menu.



Apply and return

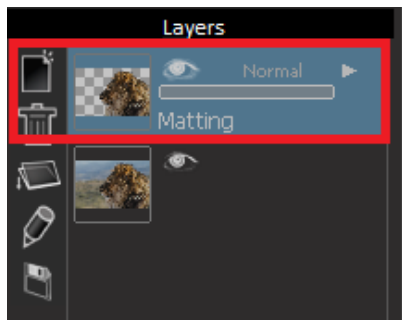
Cancel

Following this, the Post Matting Menu will appear presenting you with an array of options of how you can proceed with the cropped object. To have your cropped object remain as its own layer, select the option ***Duplicate Layer***. Further explanations regarding the re-maining Menu options can be found in the chapter titled *The Post Matting Menu*.



Alternatively, you can also immediately insert a new background. To do this, go to *Change background*.

The matting result can now be found in the drop-down tab on the right side labeled *Layers*. In order to be able to recognize your efforts and view the matting result, you have to first hide the original picture containing the background. This can be done simply by clicking on the “eye symbol” located next to the layer:

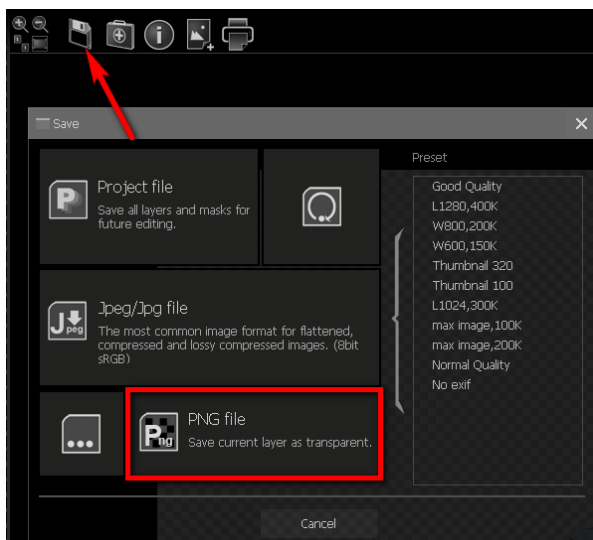


Now you have the option of either saving your work by clicking on the save symbol in the upper region of the image, or you can keep working on the image with the numerous effects and editing possibilities in **CutOut 8 professional**.

Make sure that you have selected the correct layer! In this case you have to select the layer with the matting result.

Note that you should select PNG as the storage format to preserve the transparency information of the image.

You have now saved the lion on a transparent background and can use it in other programs as well.



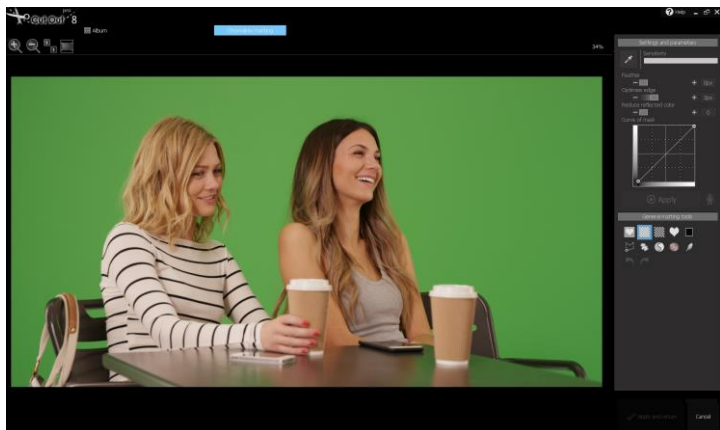
Once again, quickly listed here are the most important steps in the selection of the inside and outside areas:

- Use the polygon tool in the selection of the inside and outside selection.
- Click once to begin the selection.
- One right-click of the mouse removes the previous point.
- Moving and clicking of the mouse continues the selection.
- Double-clicking ends the outline selection
- Use the mouse wheel to zoom in and out.

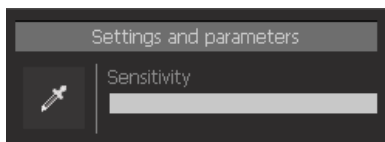
2.2 Chromakey Matting

Method used for cropping people or objects from images with monotone blue or green backgrounds.

In order to crop objects with a monochrome green or blue background in **CutOut 8 professional** using chromakey matting, select the desired image in album mode and click on *ChromaKey* in the menu bar. The selected image should now be opened in the Chromakey Matting menu as follows:



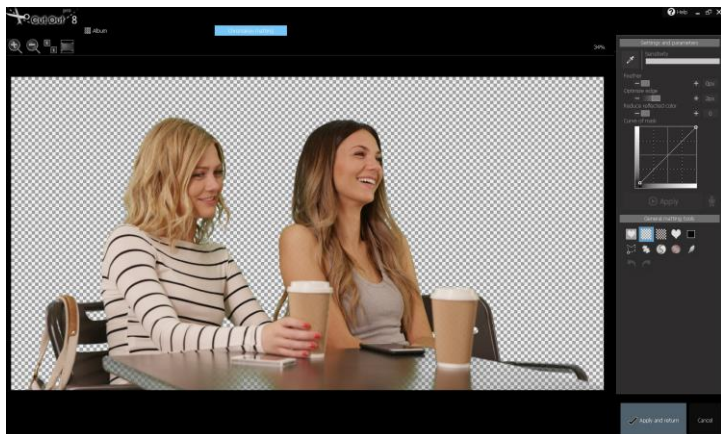
On the right side of the screen, you now have various matting setting options at your disposal that can be used to optimize the release result.



In order to crop the persons on the picture, i.e. to extract the green background, first click on the pipette symbol:

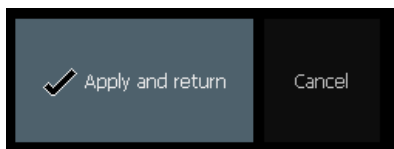
Then click on a spot in the image that corresponds to the background color, in this case a green area. Using the pipette tool, gives **CutOut 8 professional** the information which color corresponds to the background. **CutOut 8 professional** automatically detects which areas need to be extracted from the image and which need to be retained.

The result is displayed directly, whereby the distant background is displayed transparently (gray-white grid-pattern):

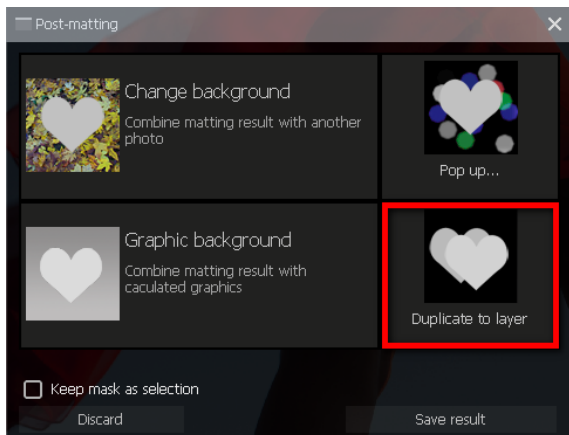


Since the green background in this picture stands out very clearly from the object (the persons), the matting result is already quite optimal and hardly needs any further improvement. However, one does not always have to deal with such clearly distinguishable background colors, so that the matting result should often still be improved. In this case, please turn to the chapter *Chromakey Matting Optimization*, which explains the other tools of the Chromakey Matting menu.

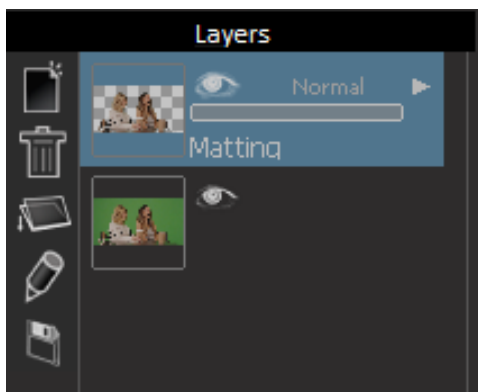
To create the displayed matting result as a separate layer in **CutOut 8 professional** and then edit or save it, click *Apply* in the Chromakey-Matting menu.



As a result, the Post-Matting Menu will appear presenting you with an array of options on how you can proceed with the cropped object. To have your cropped object remain as its own layer, please select the option *Duplicate Layer*. Further explanations regarding the remaining Menu options can be found in the chapter titled *The Post Matting Menu*.



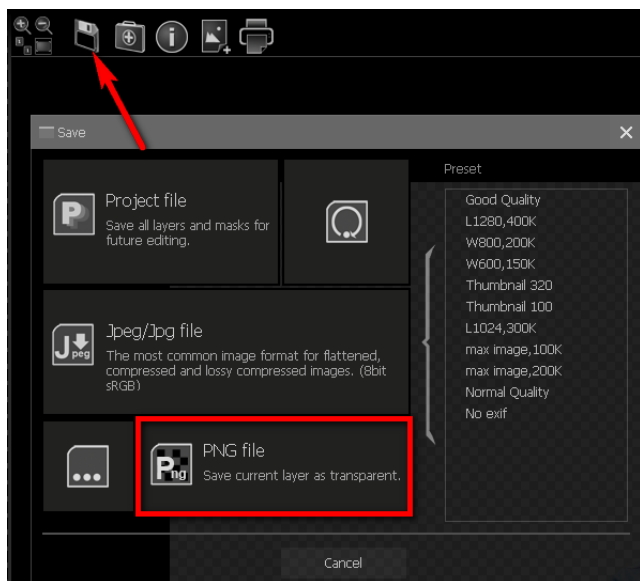
The matting result is now available in the menu bar on the right in the **Lay-ers** area. In order to recognize the matting result, however, you must hide the layer of the original image that still contains the background. You can do this by clicking on the "eye symbol" next to the layer:



Now you have the option of either saving your work by clicking on the save symbol in the upper region of the image, or you can keep working on the image with the numerous effects and editing possibilities **CutOut 8 profes-**

sional has to offer. When proceeding to the editing stage, make sure to select the correct layer, in this case—the matting result.

Please keep in mind that your project should be saved in PNG format in order to retain its transparency information.



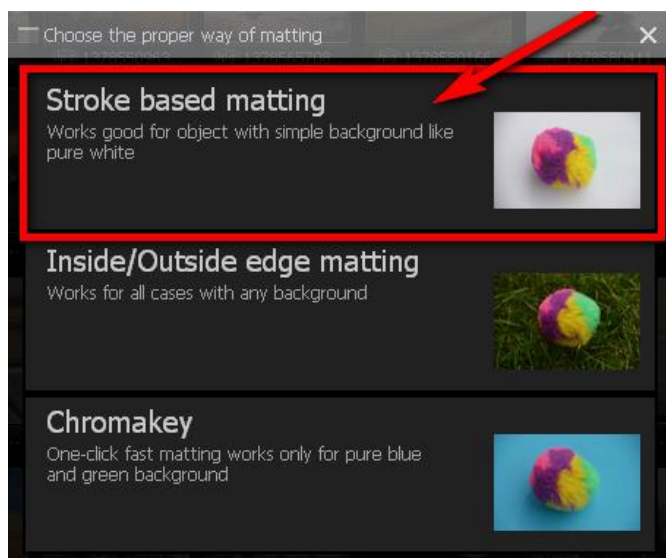
Note: This chapter should serve as a simple introduction into object cropping using Chromakey Matting. For a more detailed overview of functions found in this menu, please turn to the chapter *Chromakey Matting Optimization*.

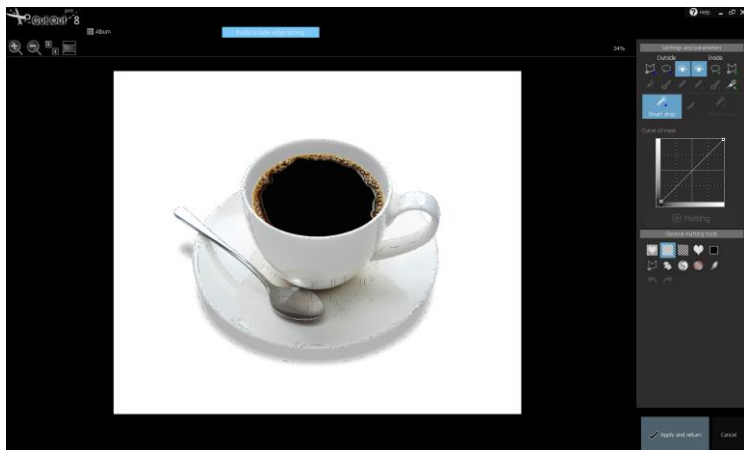
2.3 Stroke based Matting

Use this method to crop images that have a white, gray, or black background. This method is also used to cut out areas of an object that also belong to the background.

First Application Example — Cropping Objects on White Surfaces

Select your image from Album Mode and click the option labeled “Cut Out” in the menu bar.





Section with the calculated segments

The image has now been segmented into separate sections according to their brightness levels, edges and coloration. Now click on the white background to crop the object.

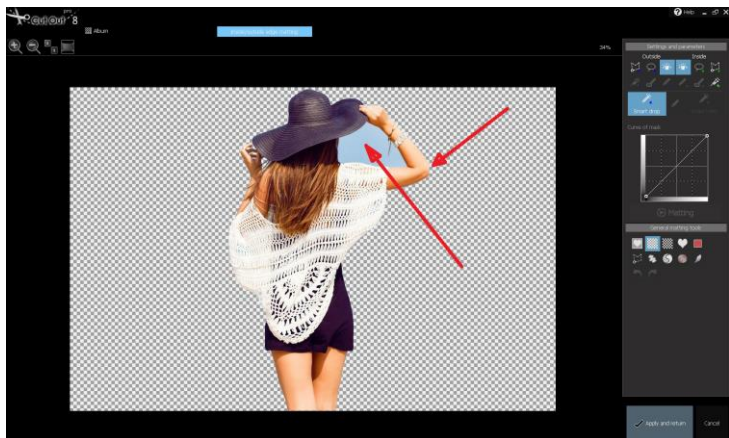


The object is now perfectly cropped. The selected region now shows a green tint, the background blue. Now click on the *Matting* button to remove the background. Following this, click *Apply* and choose a new background for your object.

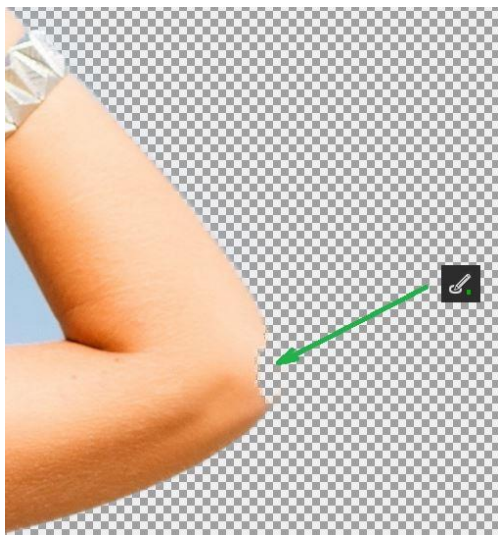
Second Application Example: Combining Inside/Outside Edge Matting with the Segmentation Method to flawlessly remove sections from the Inside region.

Select the Image you would like to work with and click the **Cut Out** button.

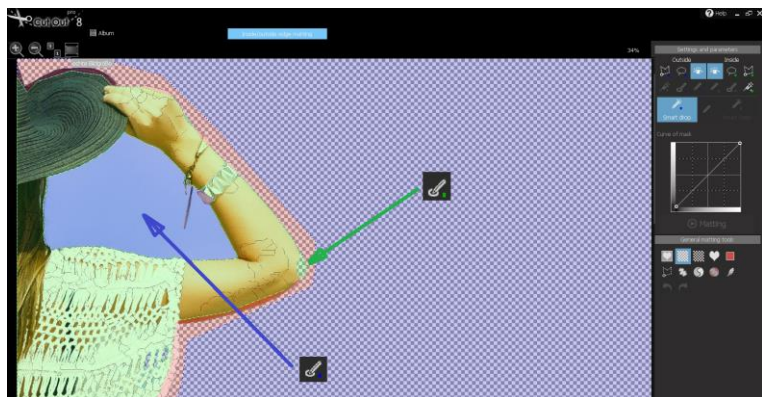
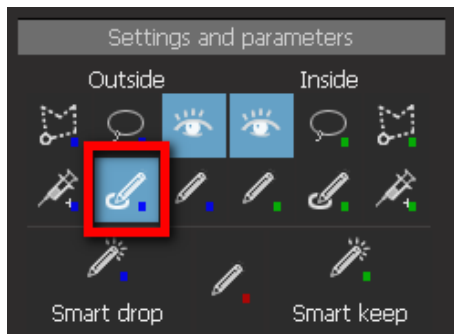
Now choose the Inside/Outside Matting method and select the inside and outside edges as usual. The cropped result now looks like this:



We immediately see that the sky between hat and arm still has to be removed. In addition, a small part of the arm was cut away and needs to be brought back.



Now click on the segment calculation symbol.



In order to incorporate the sky region into the outside calculation, simply designate this area with the blue segmentation. The green segment selection should now be used to bring back the part of the elbow missing in the cropped result. Clicking **Execute** followed by **Apply** will finalized your edits.

The result speaks for itself!

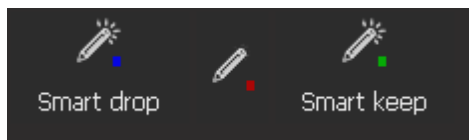


3. Editing Cropping Results

3.1 Editing Inside/Outside Edge Matting Results

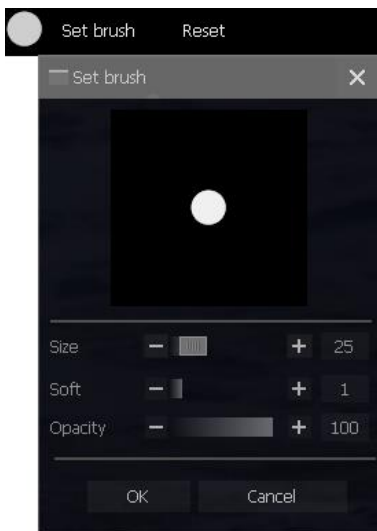
In **CutOut 8 professional**, you can now do your cropping even faster using inner and outer edges. With the help of a contour tool, you simply roughly draw the edges of the inner and outer areas and **CutOut 8 professional** automatically recognizes in which area the separation should take place. Then you can still adjust the separation area. With this function, which is particularly suitable for cutting objects with clear edges, you save a lot of time.

You can find these contour tools alongside the well-known polygon tools used for the inside and outside edge selections:

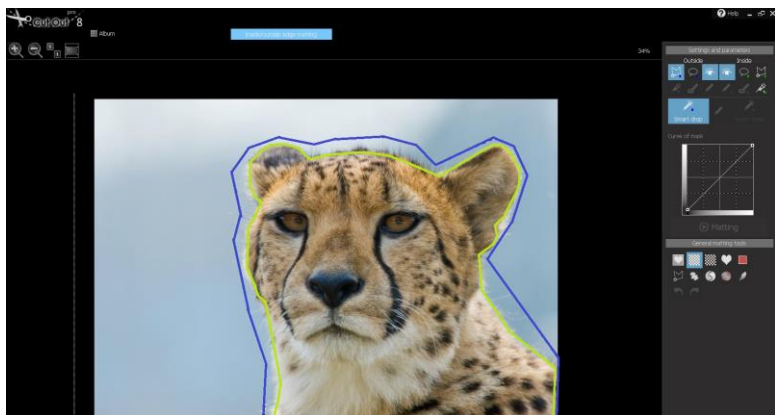


In contrast to the polygon tool, you only have to create a rough out-line along the inside and outside edges of the object you wish to crop, thus saving a great deal of time. When working with the contour tool, you can adjust the brush-settings at the top of the screen before you begin working:

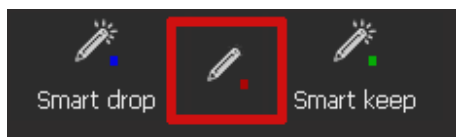
Subsequently, you first use the contour tool for the inner selection to bypass the inner area of the object, then switch to the contour tool for the outer selection and bypass the



outer area of the object. The procedure is therefore identical to the procedure for using the polygon tool described in the Quick Start chapter.



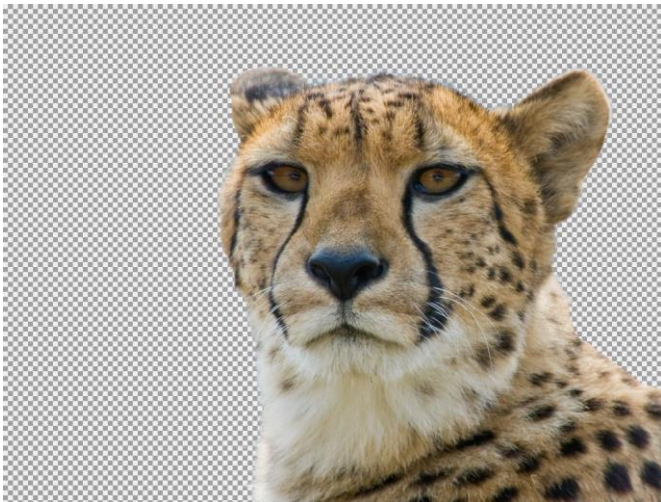
CutOut 8 professional uses the roughly painted selection to identify which areas belong to the interior and which to the exterior. With the contour tool, that is located between background and object selection, you can adjust the intermediate area, called the unknown area:



This makes sense in cases where the calculation cannot clearly identify a region as belonging to the inside or outside, for example around the cheetah's beard in the image above. After moving over the intermediate area with the contour unknown tool, the intermediate area expands.



At first glance, the contour tool delivers a professional grade result just like the polygon tool, and this in considerably less time.

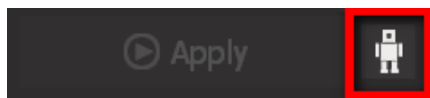


Simply bypassing the edges with the help of the edge tool is always useful if the object to be cut has particularly clear edges. If this is not the case, the polygon tool may be more suitable.

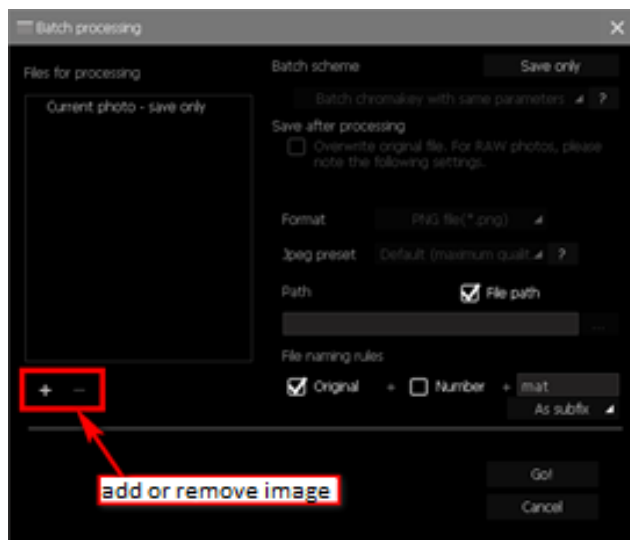
3.2 Editing Chromakey Matting Results

In addition to the fact that the algorithm has been greatly improved and the speed of the chromakey matting process has been significantly increased, **CutOut 8 professional** offers the possibility of batch processing with chromakey matting. This is especially useful if you want to crop objects from a series of images with the same or similar background. For example, several landscape shots with a blue sky as background or portraits, which were all taken against the same background, are conceivable. In this case, you only have to make the matting settings once and they will then be automatically applied to all other images.

To do this, click on the small robot icon next to the Apply button in the Chromakey Matting menu after you have made the desired matting settings for an image:



In the batch processing window that opens, click the '+' symbol to add more images for processing. Use the '-' symbol to remove images that have already been added. Once you have selected all images, you can edit the storage path of the result images and the rules for file naming and then start the matting process with a click on **Start!** The progress bar at the bottom of the window shows you how far the processing has progressed. The images are saved in PNG format to preserve the information of the transparent image areas.



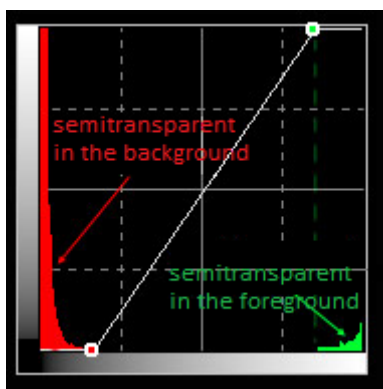
4. Optimizing Results using Matting Tools

4.1 Chromakey Matting Optimization

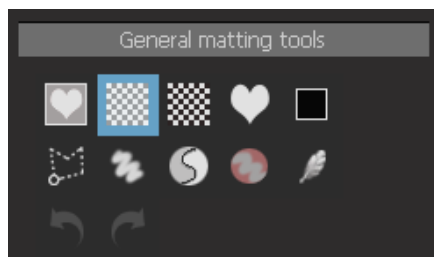
4.1.1 Settings and Parameters

For a description of when you should use chromakey matting and how to crop an object easily, please refer to the Quick Start chapter. This chapter deals with more problematic cases and how to optimize the cropping results using the other tools of Chromakey Matting. If the procedure in the Quick Start chapter does not yield a satisfactory result, the additional options in the Chromakey Matting menu are available to you:

- **Feather Brush**
Adds individual pixels to the mask and ensures a softer transition from the foreground to the background.
- **Optimize Edge**
Optimizes the mask around the edges of cropped object.
- **Reduce Reflected Color**
Sometimes the background reflects its colors into the foreground, for example when a person wears white clothes and stands in front of a blue background. This can result in the clothing being semi-transparent. With this option it is possible to reduce this effect.
- **Curve of mask**
Improves the mask after matting process. The curve is variable adjustable by adding more control points.

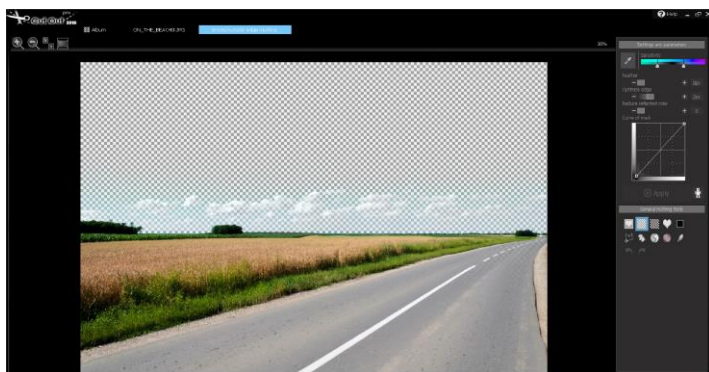
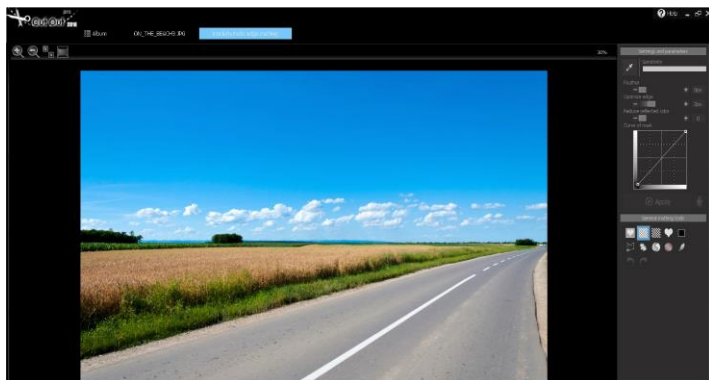


If the matting result has flaws, you can use the **matting tools** to refine the result:



But now to the practice: Let us take as an example the following picture, which shows a landscape with a blue sky, but crossed by some white-grey clouds, and from which you would like to remove the entire sky including clouds.

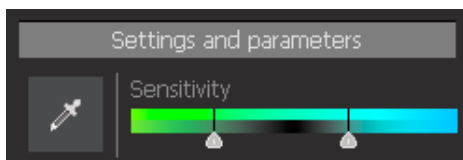
The different functions of the Chromakey-Matting menu will be gone through step by step with the help of this picture and finally it will be explained how the clouds can be removed:



If you apply chromakey matting to this image by clicking on an area of the blue sky with the pipette tool as described in the Quick Start chapter, the following result will be shown:

The blue areas of the sky were successfully removed, but the clouds were not. These still shine through, because they are not blue, but white-grey.

Sensitivity



In the sensitivity bar, you can increase or decrease the sensitivity of the selected color tone. In the following example, if you move the left slider further to the left, the color range that is displayed transparently expands by the displayed hue range. To remove the clouds from the image, it might be helpful to move the left slider to the left, as even brighter blue tones will then become transparent in the image. Then click **Apply** to see the result.

With closer examination, this procedure seems to have yielded slight improvements:



Exclusion of lighter blue tones

Inclusion of lighter blue tones

However, very bright blue tones are now transparent, but not the really white cloud areas. However, the sensitivity adjustments are generally well suited to include or exclude further color ranges of the color selected with the pipette.

Feather Brush



With this slider you extend the border area of the transparent regions by 1 to 8 pixels. A high value will therefore include an extended area in the border area between foreground and background.

In our example image, this setting has the following effect:



Feather Brush Area Radius at 0 Pixels

at 8 Pixels

This option can therefore be used reliably if the Chromakey tool has skipped a small area that should have been transparent or if a softer transition between foreground and background is desired. In this case an optimization can be achieved by increasing the captured border pixels in the border area.

Optimize Edge

With this function **CutOut 8 professional** optimizes the transitional region between the foreground and background according to the set amount of Applied to our example, improvements are hard to see. The impact is only marginally visible:





Optimize Edge 0

Optimize Edge 5

The edges, i.e. the transitions from field to sky, have been slightly improved and optimized on the right image to create a smoother transition. This effect increases the higher the pixel value is selected in the slider.

Reduce Reflected Colors

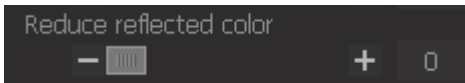
It may happen that the background reflects its color to the foreground. If this is the case with your image, you can limit this effect with the *Reduce Reflected Colors* slider. In our example image, a high value causes the already transparent clouds to reappear because the program assumes that they were wrongly considered as background during the matting process. So this is not helpful for our plan to remove the clouds. However, it is very helpful for the street area of the image. In the original matting result, small areas of the road were made transparent by mistake. If you now increase the slider *Reduce Reflected Colors* to 50, the result is shown in the right image:



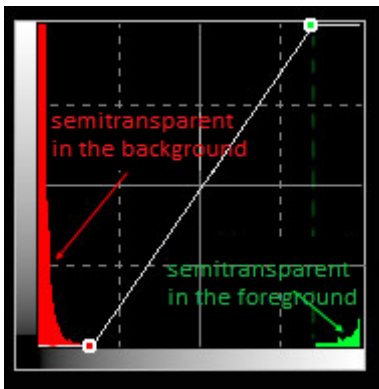
Reduce Reflected Colors 0



Reduce Reflected Colors 50



Curve of mask



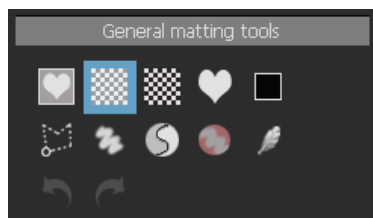
You can change the curvature of the cropping mask via the curve window.

By clicking on the curve, additional adjustment points can be added so that the curve can be variably adjusted. This makes it possible to adjust the display strength of the foreground pixels and the background pixels as required. The foreground pixels are displayed on the right side of the curve and the background pixels on the left side. The vertical axes determine the

strength or transparency with which the respective pixel area is displayed in the image. If a curve point is moved downwards in the vertical direction, the transparency of this pixel area increases.

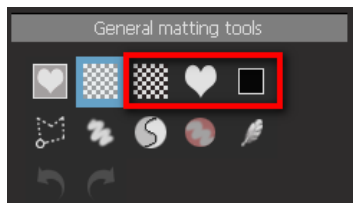
4.1.2 Matting Tools

Alongside the various settings and parameters found in the Chromakey-Matting Menu, **CutOut 8 professional** also provides access to a number of Matting Tools with which you can further optimize your cropped result, given the desired result was unable to be achieved using the previously mentioned settings and procedures.



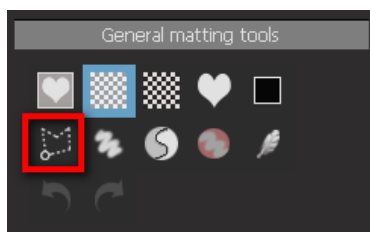
Displaying your matting result in front of a new background

With the upper row of the Matting-tools you can display the cropping result in front of different backgrounds. If you move the mouse over the image, the original is displayed. If you do not move the mouse, a fade-out effect automatically switches to the transparency view. In this way, you can quickly compare which areas were included in the matting and which were not. The first symbol shows a transparent background. The adjacent symbols can be used to display the matting result against a black-and-white background (symbol with the black-and-white tiles), and to display the matting mask as a grayscale image (heart symbol): The foreground will be white, the transparent area black, semitransparent pixels gray) or the result will be displayed against a colored background (colored rectangle).

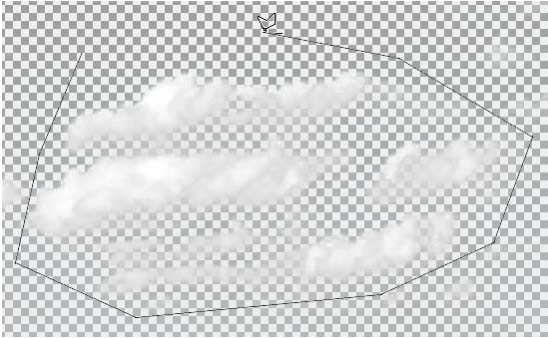


4.1.3 Allocating Regions to the Foreground/Background – Polygon Tool

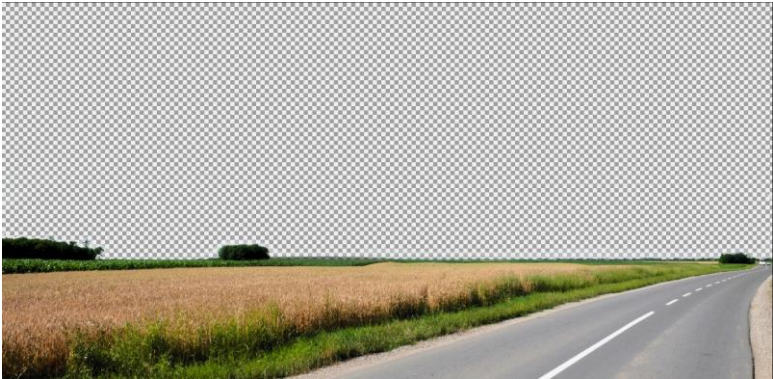
The matting tools in the second line are particularly interesting. With the polygon tool you can select and remove (i.e. make transparent) any areas in the result image or bring transparent areas back to the foreground by matting. By pressing or not pressing the SHIFT key, the selected areas are either brought back to the foreground ('+' symbol next to the polygon tool) or areas in the foreground are displayed transparently ('-' symbol next to the polygon tool). If you hold down the CTRL key when using the polygon tool, you can also make a free selection and are not bound to the polygon.



This way you can also quickly remove the clouds from our example image. Simply select the polygon tool and make sure that the '-' symbol appears next to the tool, because we want to remove an object from the foreground (make it transparent) and not the other way around:

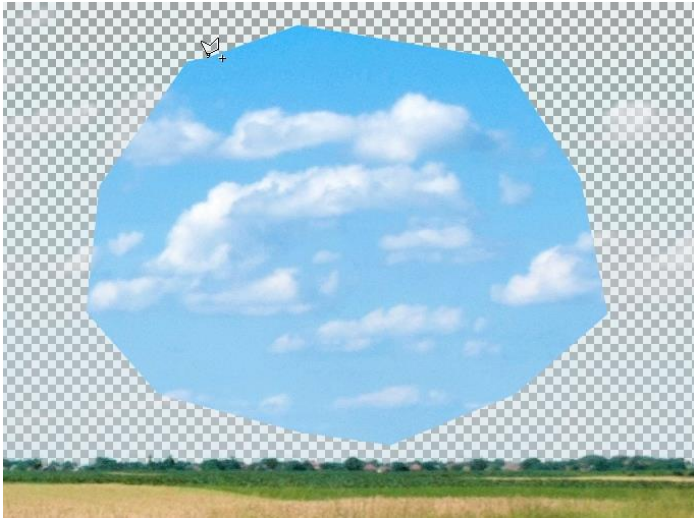


With a double click the selection process is completed and the clouds disappear at the same time:

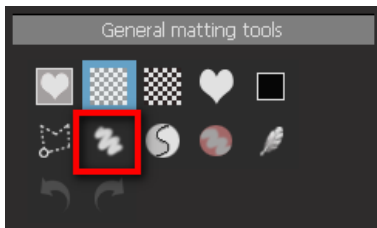


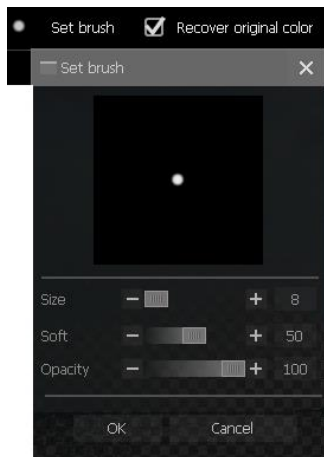
In order to be able to work more precisely, you can magnify the section of the image you are working on by increasing the zoom on your mouse-wheel or on the zoom level next to the Matting Menu on the left.

You can also bring already transparent areas back into the foreground. Make sure that the '+' symbol is displayed next to the polygon tool and then make your selection:



Paint to modify tool: The paint to modify tool in the matting menu works according to a similar principle, but using a brush instead of a polygon selection. Select the icon and set the brush properties in the upper menu bar:





In addition to the brush size, you can also set the softness and opacity. At a similar to the polygon tool, press the SHIFT key or not to either bring trans-



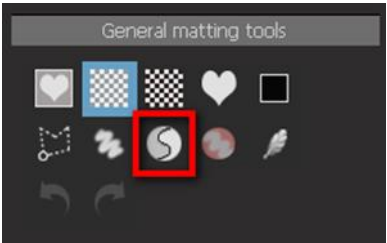
parent background back to the foreground or to make visible objects transparent. To remove the clouds from our example image, we therefore press

the SHIFT key while painting so that the small '-' symbol appears next to the pen tool and then paint over the clouds.

We set the opacity of the brush to 100, since the clouds should not become semi-transparent, but should disappear completely.

By the way, if you want to bring transparent areas back into the foreground, i.e. use the paint tool with a '+' symbol, you can check the *Recover original color* checkbox next to the brush properties. Then the transparent areas that you paint over will get their original color back.

Re-Matting Tool: The third option for assigning individual areas to the foreground or background is re-matting. To do this, select the Yin-Yang symbol from the matting-tool list. This tool allows you to select up to six hues that appear in the background and also six hues that appear in the foreground. This tool is particularly useful for rematting the edges of the foreground object, i.e. the border between the object to be cut and the background. After you have selected the tool, first click on a background or foreground area in the image. If you move the mouse over the image, you will see that in the foreground area the pipette symbol is displayed with an 'F' and in the background area with a 'B':



Once you have selected a background color and a foreground color, the pipette tool switches to the brush tool. However, if you want to select more than one color for the background, press and hold the 'SHIFT' key and then click other foreground and background colors in the image (up to 6 shades

each). The tool will then switch to paint mode. First set the brush properties (size, softness and opacity) in the upper menu bar. The principle is as follows:

If you paint with the brush over the picture, *only* the color tones that you have defined as the foreground color remain, the rest becomes transparent. Similarly, the hues that you have selected as the background color remain transparent, but the rest becomes visible again when you paint over them. If you now paint over border areas between foreground and background object, the transition area can be optimized based on your selection of foreground and background color. Right-click to reset the color selection.

In our example picture the re-matting-tool has the following effects:

After the simple matting by means of color selection there are some uncertainties in the border area between background (sky) and foreground (trees, meadow):



As you can see, some pixels in the transition area seem to be semi-transparent. In order to assign these more clearly to the foreground or background, we use the re-matting-tool to define the foreground and background colors in the border area:



Be sure to hold down the 'SHIFT' key if you are not finished with the color selection.

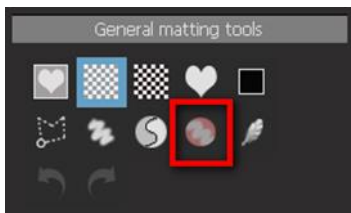
After defining the foreground and background colors of the border area, if you now move the paint to modify tool over this border area, you will see the following result:



In this case the brush was moved from the left, i.e. from the right end of the group of trees, to the right. You see the difference in the red ellipse clearly in the left, already painted over border area and in the right, not yet painted over area.

Obviously questionable, "blurred" areas could now be assigned to the foreground or background to a large extent due to the exact color definition.

Desaturate border areas: You can use the desaturation tool to desaturate selected hue areas. This can be especially useful if the edge of the clipped object contains the color of the background. Select the Desaturation tool and click on a hue in the border area of the image that you want to desaturate. Then set the brush properties in the upper menu bar and paint over the image. By reducing the opacity in the brush properties, you can vary the amount of saturation. Only the selected color range is desaturated, all other colors are preserved.



The following result is shown in our example image:



Before Desaturation

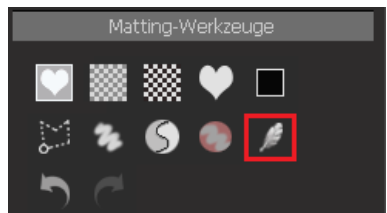
After Desaturation

You can see a less colourful transition between forest and sky. The colors of the border area have been desaturated.

Similarly, you can apply this effect to other areas of the image. If, for example, we want to desaturate the brownish grain on the field, the following result will appear:



Feather Brush: With the help of the feather brush you soften individual areas of the cropping mask and thus create a better transition. The effects are often only visible when zooming in strongly. In the upper menu bar, set the brush properties and then paint over the areas for which you want softer transitions.



Use the arrow icons to undo or repeat steps.



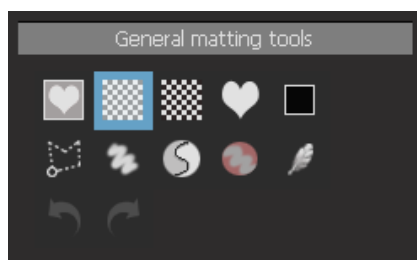
4.1.4 Batch Processing

In ***CutOut 8 professional*** you have the option of batch processing for chromakey matting. This is especially useful if you want to crop objects from a series of images with the same or similar background.

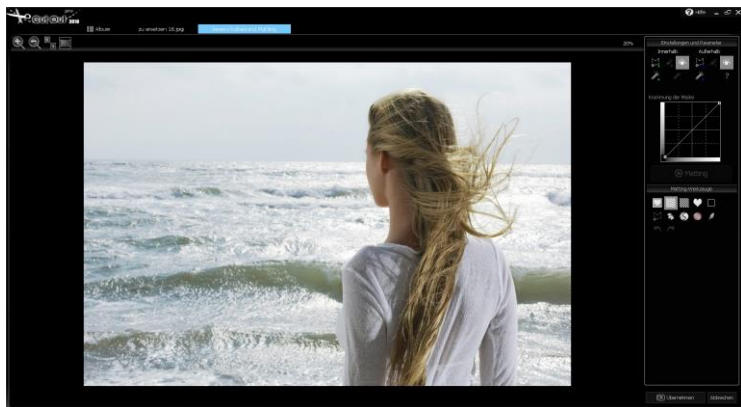
4.2 Inside/Outside Edge Matting and Stroke based Matting Optimization

4.2.1 Settings and Parameters

For a description of when to use inner/outer edge matting and how to crop an object easily, please refer to the Quick Start chapter. This chapter deals with more problematic cases and the optimization of the clipping results by means of inner/outer edge matting. If the procedure from the Quick Start chapter does not deliver a satisfactory result, the following additional options are available to you in the Inside/Outside Edge Matting menu:

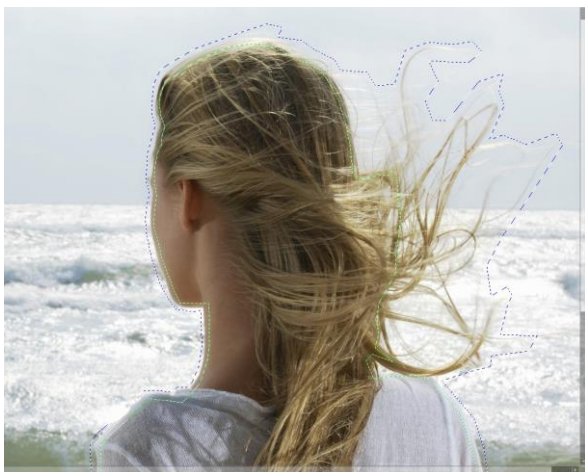


However, the first step is to optimize the image without having to resort to the matting tools. Let's take the following picture as an example, which shows a woman with her hair blowing in the wind. This is a classic case of a not simple clipping process, because there are many small intermediate areas between the hair and the background (in this case the sea and the sky). The different functions of the Inside/Outside Matting menu are explained step by step using this image and how to optimize the matting result in such a case.



If you want to cut out the woman and her hair from this picture as described in the Quick Start chapter on inner/outer edge matting, the first question that arises is how the inner and outer selection should be made, especially in the area of the blowing hair.

In a first attempt, a very large insecure intermediate area was selected in which the blowing hairs lie:



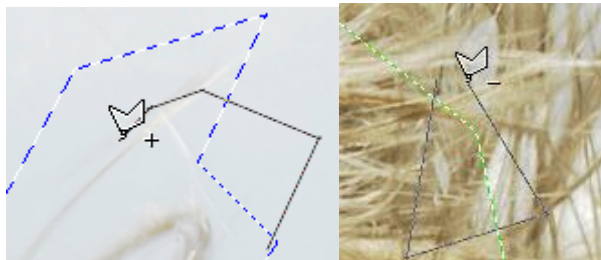
This selection led to the following, quite appealing result:



CutOut 8 professional has therefore recognized very well which areas belong to the foreground and which to the background.

Note: If you want to reduce or enlarge the inner or outer selection after you have made the inner and outer selection with the polygon tool, you do not have to redefine the entire selection again. Simply select the polygon tool for the inner or outer selection and hold down the 'SHIFT' key to select an area to be added to the selection.

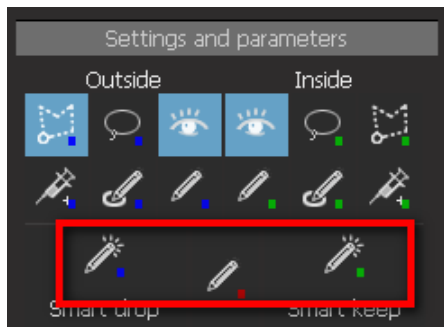
In contrast, press and hold the 'CTRL' key to mark an area to be removed from the current selection. You can recognize the "Add Mode" or the "Remove Mode" by the small '+' and '-' next to the polygon:



Here once again the most important steps in the selection of the inner and outer object area are listed in key points:

- Select the polygon tool for the inner or outer selection.
- Click once to begin the selection.
- One right-click of the mouse will remove the previously selected point.
- Moving and clicking of the mouse continues your selection.
- One double-click of the mouse finishes the selection.
- Hold the SHIFT-key for addition mode or the STRG-key for subtraction mode
- Use the mouse wheel to zoom in and out of the image.

In addition to defining the inner and outer areas using the polygon tool, you can also make the inner and outer selections using the edge tool:



The edge tool is particularly well suited for cropping objects with clear contours. This is obviously not the case with our example image. If you draw the contours for the inner and outer selection with the contour tool, the program does not recognize that the outer selection should be made around the hair strands, but moves the outer selection further inwards:



However, this can be counteracted with the contour tool for the unknown area by enlarging it:



The resulting matting result is quite respectable, but the use of the edge tool instead of the polygon tool has some more unpleasantness (see red bordered areas in the following picture):

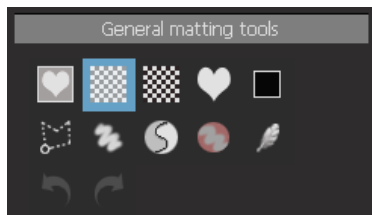


For example, you can use the matting tools to remove the white haze that can be seen around the individual strands of hair. The matting tools and their effects on the matting result will be discussed step by step below.

4.2.4 Matting Tools

Displaying your matting result in front of a new background

Alongside the various settings and parameters found in the Inside-/Outside Matting Menu, **CutOut 8 professional** also provides access to a number of Matting Tools with which you can further optimize your cropped result, given the desired result was unable to be achieved using the previously mentioned settings and procedures.



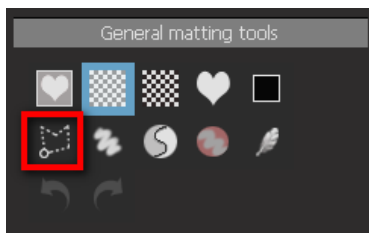
With the upper row of the Matting-tools you can display the cropping result in front of different backgrounds. If you move the mouse over the image, the original is displayed. If you do not move the mouse, a fade-out effect automatically switches to the transparency view. In this way, you can quickly compare which areas were included in the matting and which were not. The first symbol shows a transparent background. The adjacent symbols can be used to display the matting result against a black-and-white background (symbol with the black-and-white tiles), and to display the matting mask as a grayscale image (heart symbol): The foreground will be white, the transparent area black, semitransparent pixels gray) or the result will be displayed against a colored background (colored rectangle).



4.2.5 Allocating Regions to the Foreground/Background – Polygon Tool

The matting tools in the second line are particularly interesting. With the polygon tool you can select and remove (i.e. make transparent) any areas in the result image or bring transparent areas back to the foreground by matting. By pressing or not pressing the SHIFT key, the selected areas are either brought back to the foreground ('+' symbol next to the polygon tool) or areas in the foreground are displayed transparently ('-' symbol next to the polygon tool). If you hold down the CTRL key when using the polygon tool, you can also make a free selection and are not bound to the polygon.

This way you can also remove the veils around the hair strands from our example image. Simply select the polygon tool and make sure that the '-' symbol appears next to the tool, since we want to remove a foreground object (make it transparent) and not the other way around:

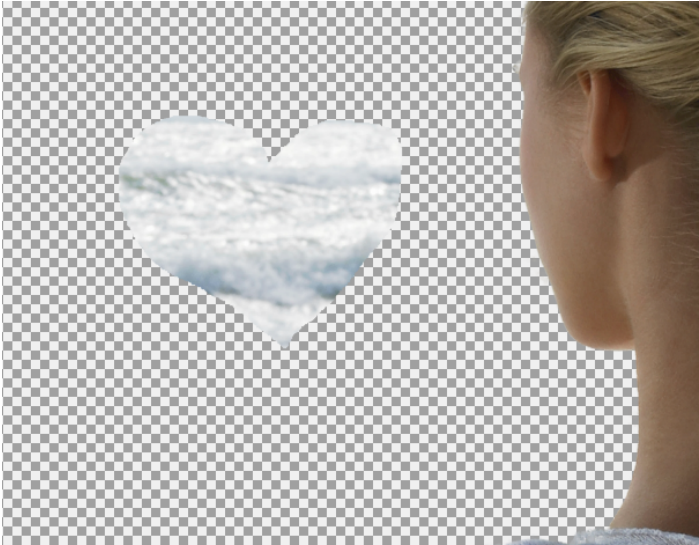


With a double click the selection process is completed and at the same time the marked white veil disappears:



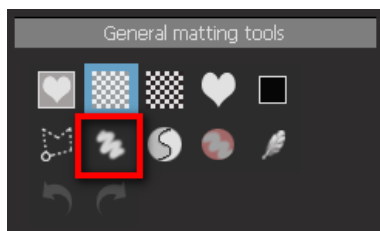
To work more precisely, simply zoom in on the image using the mouse wheel or the zoom level displayed to the left of the Matting menu.

You can also bring already transparent areas back into the foreground. Make sure that the '+' symbol is displayed next to the polygon tool (SHIFT key) and then make your selection:

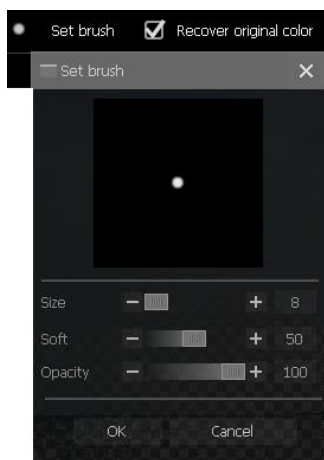


Paint to modify tool:

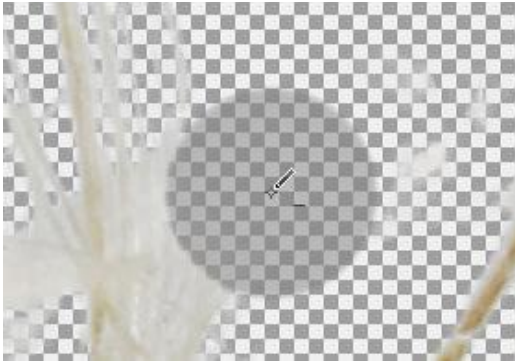
The paint to modify tool in the matting menu works according to a similar principle, but using a brush instead of a polygon selection.



Select the icon and set the brush properties in the upper menu bar:



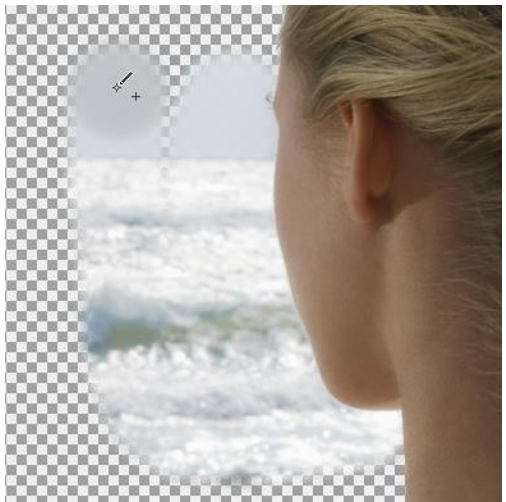
In addition to brush size, you can also determine softness and opacity. At a lower opacity, the areas you color become semi-transparent.



Similar to the polygon tool, press the SHIFT key or not to either bring the transparent background back to the foreground or to make visible objects transparent. To remove the white streaks around the hair strands from our sample image, we press the SHIFT key while painting so that the small '-' symbol appears next to the pen tool and then paint over the clouds.

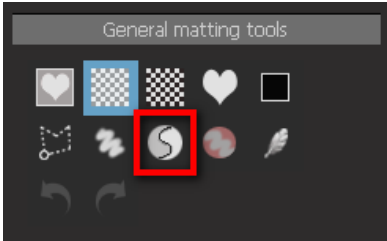
We set the opacity of the brush to 100, as the streaks should not become semi-transparent, but should disappear completely.

By the way, if you want to bring transparent areas back into the foreground, i.e. use the paint tool with a '+' symbol, you can check the *Recover original color* checkbox next to the brush properties. Then the transparent areas that you paint over will get their original color back.



Re-Matting Tool:

The third option for assigning individual areas to the fore-ground or back-ground is re-matting. To do this, select the Yin-Yang symbol from the matting-tool list.



This tool allows you to select up to six hues that appear in the background and also six hues that appear in the foreground. This tool is particularly useful for rematting the edges of the foreground object, i.e. the border between the object to be cut and the background. After you have selected the tool, first click on a background or foreground area in the image. If you move the mouse over the image, you will see that in the foreground area the pipette symbol is displayed with an 'F' and in the background area with a 'B':



Once you have selected a background color and a foreground color, the pipette tool switches to the brush tool. However, if you want to select more than one color for the background, press and hold the 'SHIFT' key and then click other foreground and background colors in the image (up to 6 shades each). The tool will then switch to paint mode. First set the brush properties (size, softness and opacity) in the upper menu bar. The principle is as follows:

If you paint with the brush over the picture, only the color tones that you have defined as the foreground color remain, the rest becomes transparent. Similarly, the hues that you have selected as the background color remain transparent, but the rest becomes visible again when you paint over them. If you now paint over border areas between foreground and background object, the transition area can be optimized based on your selection of foreground and background color. Right-click to reset the color selection.

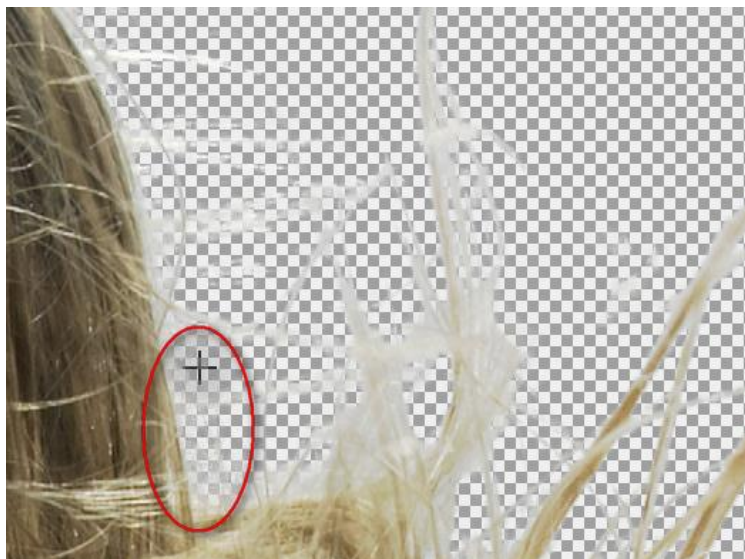
In our example picture the re-matting-tool has the following effects: After the simple matting by means of color selection there are some ambiguities in the border area between background (ocean/sky) and foreground (woman's hair):



As you can see, some pixels in the transition area seem to be semi-transparent. In order to assign them more clearly to the foreground or background, we use the re-matting-tool to define the foreground and background colors in the border area:



Be sure to hold down the 'SHIFT' key if you are not finished with the color selection. After defining the foreground and background colors of the border area, if you now move the paintbrush over this border area, you will see the following result:



In this case, the brush was moved from bottom to top, exactly in the area of the red ellipse. If you compare this area with the previous image, you will notice that the unsightly streaks in this area have disappeared.

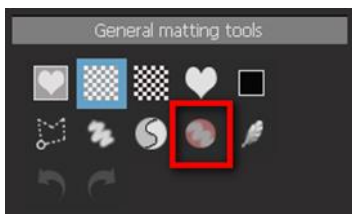
Obviously, questionable "blurred" edges of the foreground and background areas could now be more clearly separated. After complete re-matting of the displayed image area, it looks like this:



Due to the exact color definition of foreground and background color, the "unknown" areas could be assigned to foreground and background to a large extent.

Desaturate border areas:

You can use the desaturation tool to desaturate selected hue areas. This can be especially useful if the edge of the clipped object contains the color of the background. Select the Desaturation tool and click on a hue in the border area of the image that you want to desaturate. Then set the brush properties in the upper menu bar and paint over the image. By reducing the



opacity in the brush properties, you can vary the amount of saturation. Only the selected color range is desaturated, all other colors are preserved.



Feather Brush: With the help of the feather brush you soften individual areas of the cropping mask and thus create a better transition. The effects are often only visible when zooming in strongly. In the upper menu bar, set the brush properties and then paint over the areas for which you want softer transitions.

4.2.2 Cropping Intermediate Areas of an Object using the Edge Tool

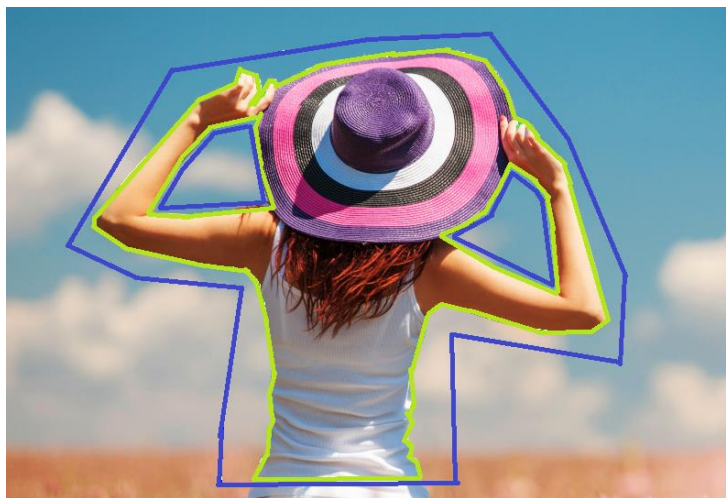
Often you are confronted with objects you that have elements of the background situated within them that need to be removed.

Typical examples are photos in which people have their hands situated on their hips, or as in our example below, positioned on their heads or hats:

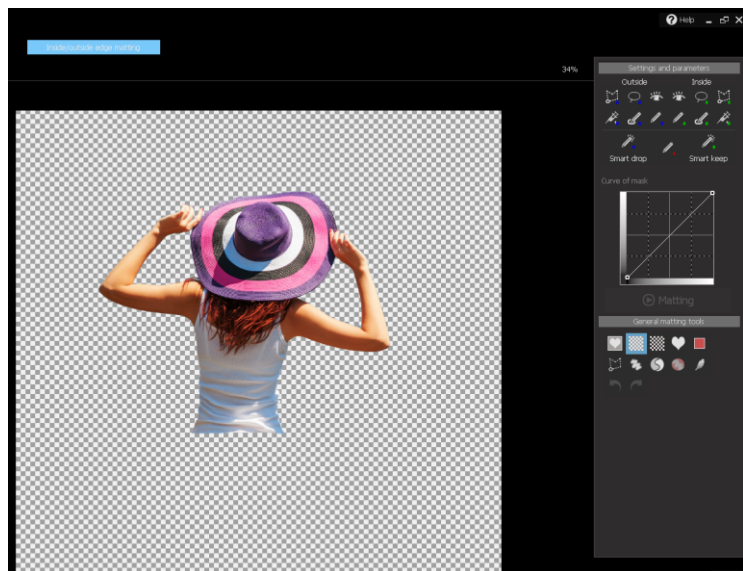


When cropping such an image using Inside/Outside Edge Matting, the outcome becomes problematic due to the fact that the areas between the arms, head and the hat are not removed, rather remain in the cropped result.

With the new edge tool in ***CutOut 8 professional*** you can easily remove these regions by outlining them individually after drawing the inside and outside outline around the entire person:



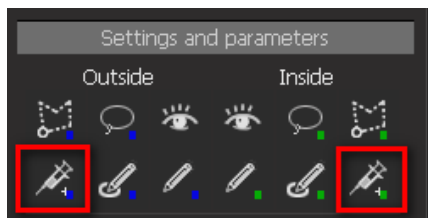
The result of this edge definition speaks for itself:



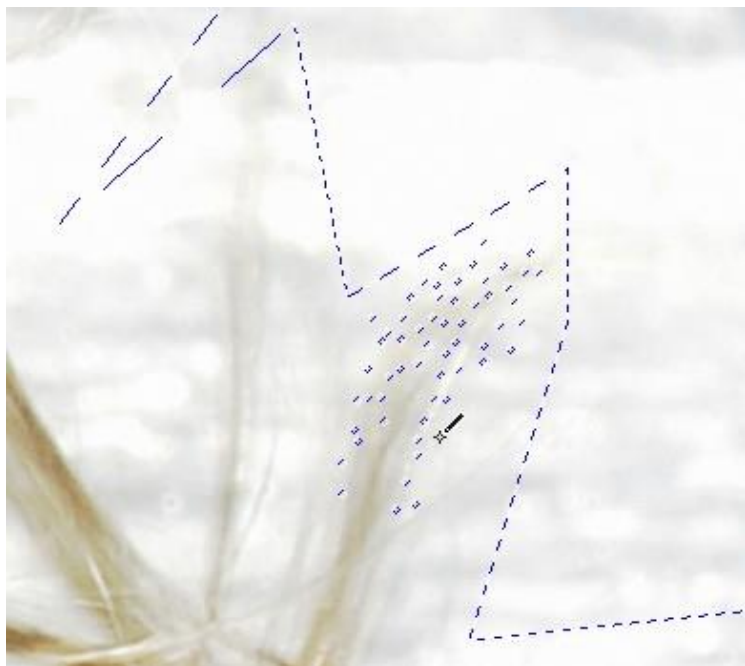
The problematic areas between arms, head and hat were removed very quickly and successfully.

4.2.3 Inject Tool for Detail Enhancement

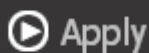
The inject tool, located directly next to the polygon tool in the menu, enables you to add individual pixels to both the inside and outside object edge selections.



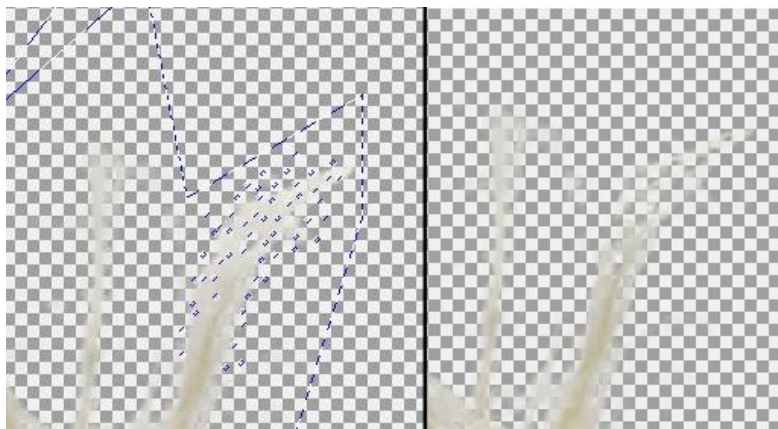
For example, after defining the inside and outside object outlines, you may use the inject tool for touching up the outside outline by clicking on each individual pixel you believe to belong the fore-grounded object. In the example below, we are attempting to re-move the white streaks surrounding the strands of hair:



Because each click selects a pixel, you can work very precisely. When you've finished your selection, click *Apply* again to get an updated matting result.



The result in this case is the following:



Before inject tool

After inject tool

It is apparent in this example image that the white streaks around the strands of hair have almost completely been edited out. With each additional pixel adjusted, the clearer your result will appear.

The inject tool for the inner selection works in the same way as the injection tool for the outer selection: Click pixel by pixel on the steles in the image to be assigned to the inner area and then click *Apply* again to see the result.

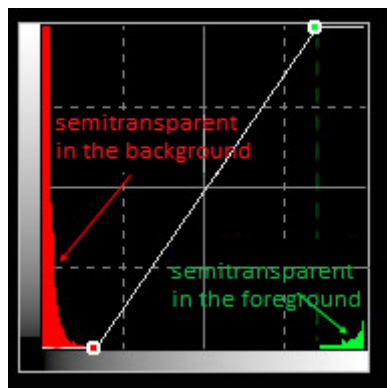
Since the changes made by the injection tool are small details, you need to zoom in on the image close enough to detect the differences accurately. This is the only way to ensure accurate analysis.

Curve of mask

You can change the curvature of the cropping mask via the curve window.

By clicking on the curve, additional adjustment points can be added so that the curve can be variably adjusted. This makes it possible to adjust the display strength of the foreground pixels and the background pixels as required. The foreground pixels are displayed on the right side of the curve

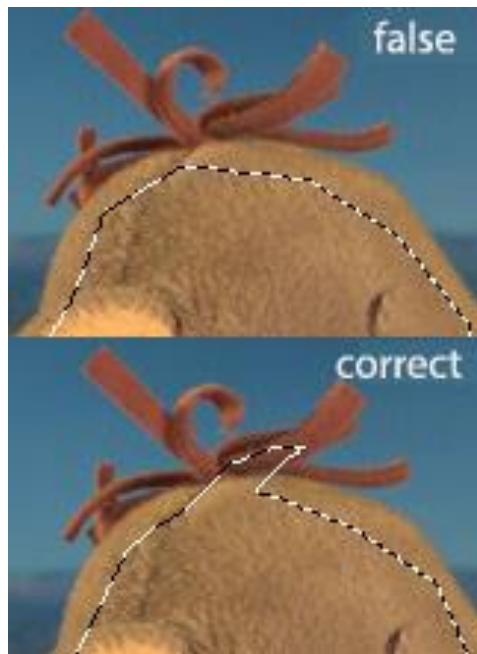
and the background pixels on the left side. The vertical axes determine the strength or transparency with which the respective pixel area is displayed in the image. If a curve point is moved downwards in the vertical direction, the transparency of this pixel area increases.



4.3 Additional Tips for Cropping Complicated Objects

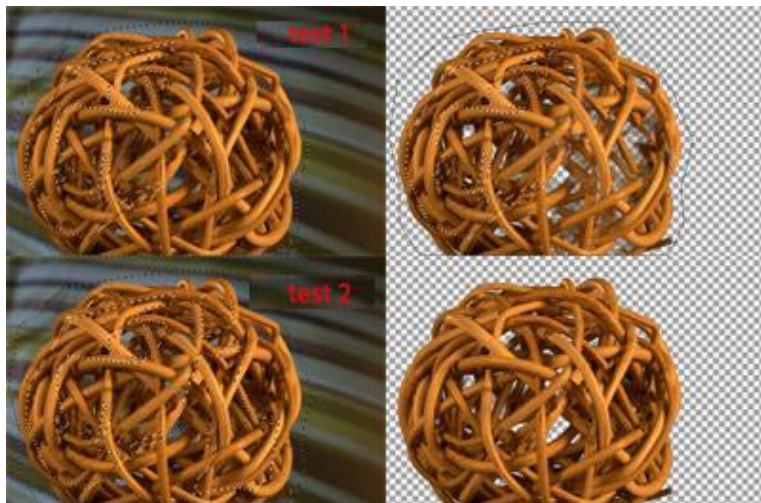
Close to the edge or farther out?

If the area has different colors or textures, try to select the areas as precisely and close to the edge as possible. If the subject is rather simple and explicit, a rough selection is sufficient.



How to crop a complicated object?

You can first create a rough selection and extract it. Check the result. If the foreground or background becomes semi-transparent, use the addition or subtraction mode of the polygon tool to add a pattern or use the matting tools discussed in the previous chapter. Then repeat the matting until you get a good result. The injection tool is also very useful in this case.

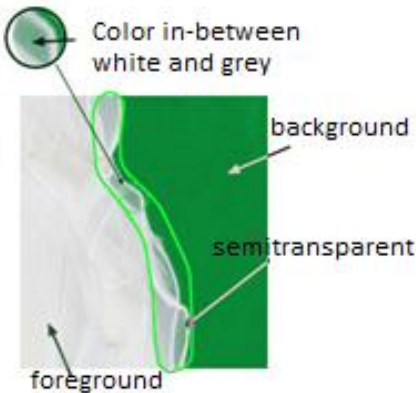


5. Digital Matting: Good to Know

Matting is understood as the process in which the foreground and background are separated within an image. In order for this to be realized, one must generally follow a number of fundamental steps.

- Define the edges of the foreground object.
- Determination of opacity (*transparent, semi-transparent or opaque*).
- Inverse Calculation of the original color tone of semi-transparent pixels.

Why calculate semitransparent pixels inversely? The following example illustrates this:



The pixels located in the semi-transparent area appear white in the original photograph. Since these are semi-transparent, the green hue of the background is mixed with the white pixels.

When the object is cropped and placed in front of a new back-ground, this pixel grouping shows a green shimmer. This effect can be avoided through

the inverse calculation and the resulting reinsertion of the original color tone into semi-transparent border region of the object:



without inverse calculation

with inverse calculation

5.1 Matting technologies in general

Standard Method

The simplest method when it comes to cropping involves marking the foregrounded object and removing it from the image. One problem with this procedure is the fact that semi-transparent pixels are not taken into account when the object is removed.

Advanced Tools

Advanced Tools such as the magnetic lasso are also available for use, however the same problem arises as in the standard outline selection method, that is that semi-transparent pixels are not included in the cropping procedure.

5.2 Chromakey Matting

This procedure originates from the video sector. The object to be cropped is filmed or photographed against a monochrome, usually blue or green, background. All pixels that do *not* have this constant color are then assigned to the foreground.

With this procedure, however, it is assumed that the foreground object is not transparent: a translucent garment, for example, would shimmer blue in front of a chroma key, even if it were placed in a new background. This leads to an unnatural look, as you can see in the early action movies during stunts against an artificial backdrop.

This method is very useful, but has two limitations:

- The background color cannot be included in the foreground. If the color is in the foreground, it is assigned to the background and appears transparent or semi-transparent in the composition.
- In any case, a plain background is required. Differences in color are not taken into account and added to the selection.

For this reason, chromakey technology is usually only used in professional environments.

5.3 Inside/Outside Edge Matting

Due to the limitations of chromakey matting, we need another way of matting. This should have no background restrictions, support semi-transparency and be easy to use.

These criteria are fulfilled by the " inside/outside edge matting " process, which is very suitable for processing most photos.

With this type of cropping, the inner and outer edges of the object to be cropped are defined. The selection of the inner area is done by marking an area within the object to be uncovered. Work as close to the edge as possi-

ble. The outer area is then marked, working as closely as possible to the outer edge. The area between the inner and outer edge is the semi-transparent area.

Due to the fact that the program can never determine the actual color values 100% exactly, errors often occur during the first processing.

Common Error Examples

1. The exact recognition of the difference between the fore-ground and background can even prove difficult for the human eye:



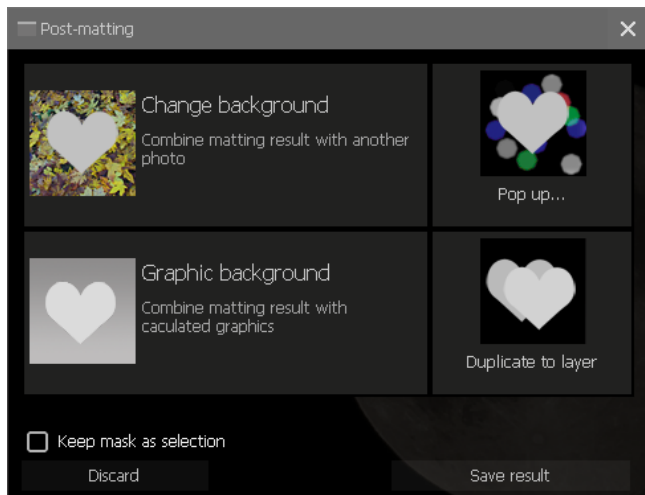
2. The program attempts to calculate the difference in the background and foreground colors. However, when numerous differences make the foregrounded object less distinguishable from the background, errors can occur in the calculation.



6. The Post-Matting Menu

After you have completed the Matting stage and optimized your cropped result with the help of the various Matting-tools available, there is nothing holding you back from continuing to the next stage of editing. If the Matting result reflects your desired outcome, click on the *Apply* button in the Matting-Menu.

Following this the Post-Matting Menu will appear:



This Menu offers the following options:

- **Change background:** This option allows you to place your previously cropped object in front of a new background image of your choice. For example, you can “change the location” of your newly cropped object.
- **Background blur:** When you select this function, the program switches to blur mode. In this mode, you can blur the background of the image very variably. The background is retained and only

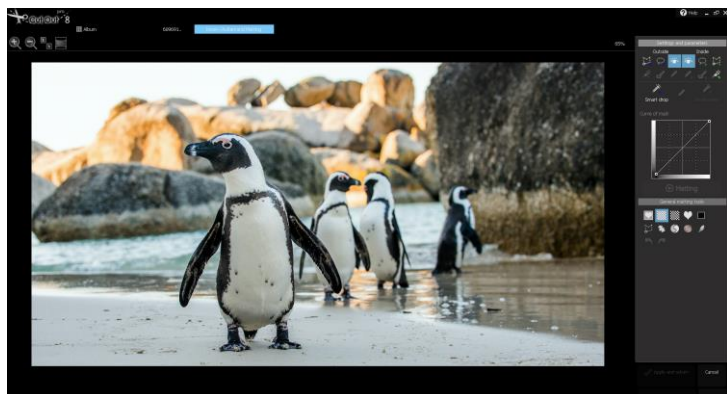
this background is affected by the blur effect. This allows you to achieve impressive depth-of-field effects.

- **Duplicate to layer:** This function inserts the matting result as a separate layer in the user interface. You can then use this layer as you like. You can either save the matting result or edit it professionally with the numerous editing options and effects of **CutOut 8 professional**.
- **Split layer:** This function can only be activated when working with a base layer and saves both the foreground and background as their own layers.
- **Delete background:** Only active if it is not a basic layer. The background is deleted and only the detached object is retained as the layer.

In addition to these options, choosing the option *Save Result* will allow you to save your Matting result to any location of your choice in either .png or .psd format.

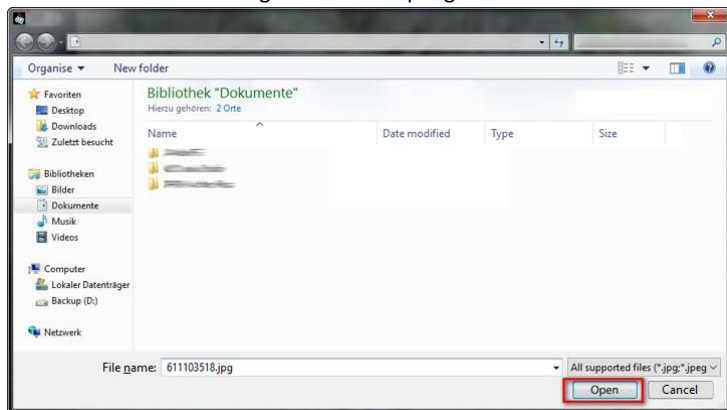
6.1 Changing the Background Image

This penguin will serve as an example image.

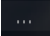


To move it to a warmer place, we select *Change Background* in the Post-Matting menu after the matting.

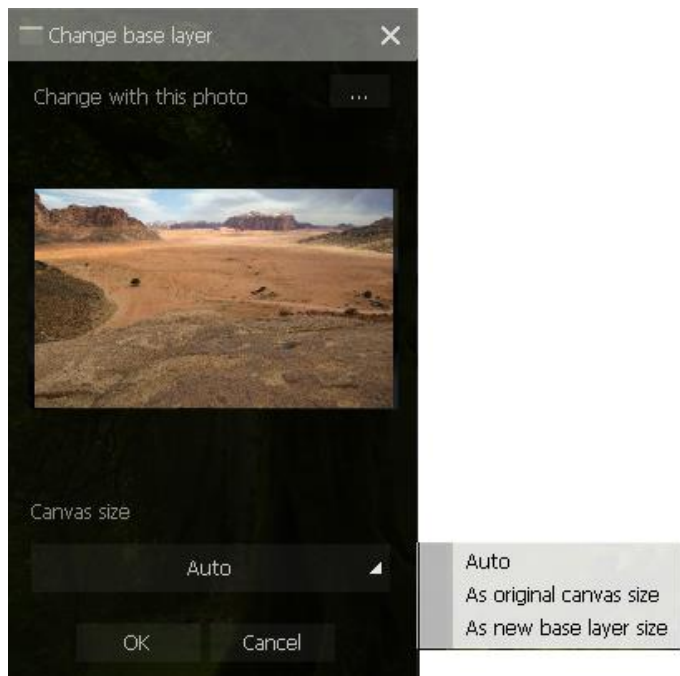
A file browser will open in which you can search for the background image that will serve as the background for the penguin:



Navigate to your desired background image, select it and then click *Open*.

Now a dialog opens in which you have the possibility to set the size of the background image individually. You can choose between *Auto*, *As original canvas size* and *As new base layer size*. To select a different background image, click on the button  in the dialog box.

To confirm your setting click OK, to cancel the process click *Cancel*.



Afterwards, the object is displayed in front of the new background:



If you now click on the image, hold down the mouse button and move the mouse back and forth, you can move the object, in this case the penguin, as you like. If you move the object a little so that the edges of the image are displayed, you can also enlarge or reduce the object by moving the mouse to the corner of the edge of the image until the arrow shown appears:



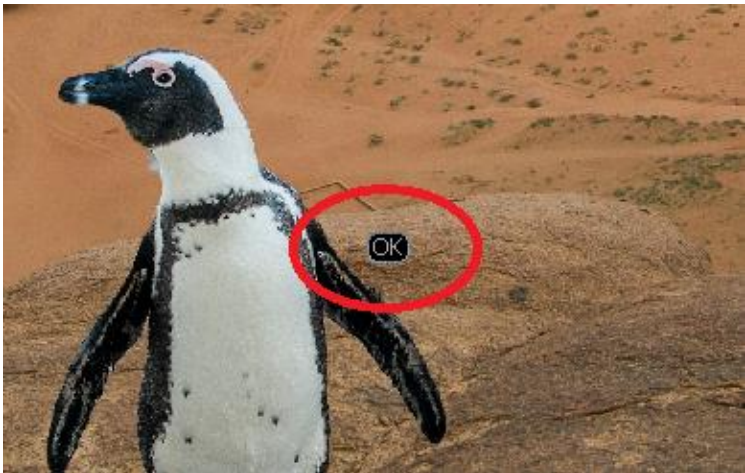
Hold down the left mouse button and move the mouse to change the size.

When you move the mouse pointer to an area outside this border, the following icon appears:



Then hold down the left mouse button and move the mouse to rotate the object at any angle. Theoretically you can turn the penguin upside down.

If you are satisfied with the size, angle and position of the object, click on the "OK" button in the middle of the image:

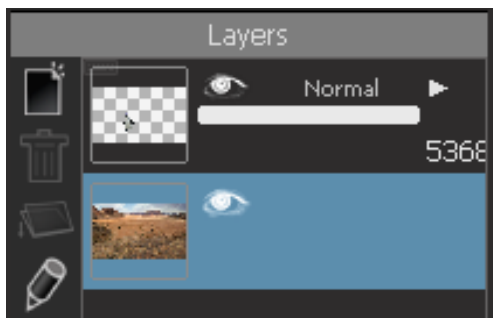


The adjusted image now appears in the user interface:



In this case the penguin was reduced in size and moved to the left. In addition, the cropping result, i.e. the penguin with a transparent background, is present in the area of the layers (red arrow in the image). So you can now proceed with the cropped object afterwards as you like (edit, save etc.), if you don't like the selected background after all.

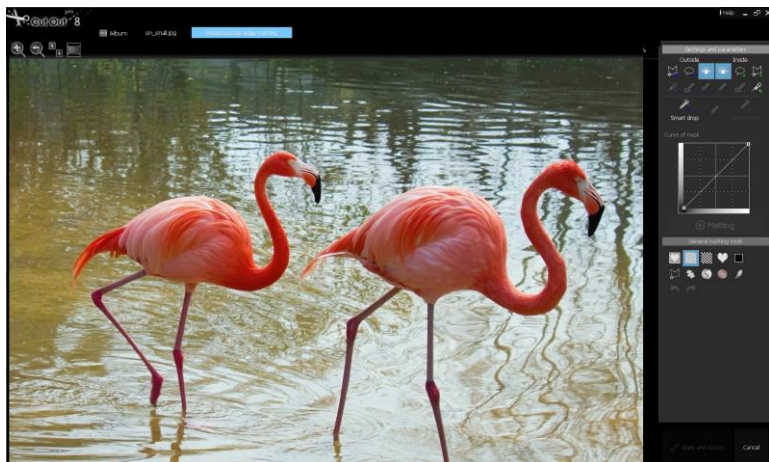
To display the penguin without a background image, simply deactivate the background layer by clicking on the "eye symbol":



6.2 Background Blur

Often you will have the following problem with your images: Your photo shows an object, an animal or a person you want to focus on. However, both the object and the background appear sharp. It is a good idea to bring the target object into focus by blurring certain areas of the background while keeping the target object sharp. Thus, the depth of field of the background should be changed. The *Background Blur* function of the Post-Matting menu helps here.

In the example image you can see two flamingos, which are obviously the target object of the photo. But also the background is sharp. It should now be slightly blurred to focus more on the flamingos.



If you select *Lens Blur* after the matting process from the Post-Matting menu, the Lens Blur menu appears:



- (1) *Radius Range*: Here you can use the slider to define the radius of the blur effect. As you will see, a high value increases the blur effect of the background.
- (2) *Highlight*: Use the highlight slider to define how much highlights of the background, i.e. bright image areas, should be highlighted. In the example image, these are the bright areas in the water where the sky is reflected. A high value makes these areas appear even brighter and thus emphasizes them.
- (3) *Aperture Shape*: Here you can change the lens shape to change the type of blur effect. Try the different shapes until you find one that suits your needs.
- (4) *Rotate Mask*: Use this slider to change the direction of the blur effect between 0 and 360 degrees.
- (5) *Depth Mode*: In depth mode, you can switch between *Plain*, *Horizon* and *Tunnel*.
Select *Plain* to get a smooth blur effect across the entire background.

Select *Horizontal* to obtain a different amount of blur effect between near areas of the background and more distant areas. Select *Tunnel* to blur certain regions of the background. The grid below allows you to specify the region or, if you select *Horizontal*, the position of the horizon from which you want to blur or sharpen.

In our example image, we select *Horizontal* to keep the close areas of the background, i.e. approximately the area in front of the flamingos' legs, sharp and to blur the more distant areas of the background. With the grid we determine the distance from which the background image should be blurred:



Try a little around to become familiar with the features and understand the implications.

- (6) *Focus (close to far)*: This slider lets you ultimately reverse the depth-of-field effect. For the example image, in which the horizontal depth mode made the near background areas sharp and the far background areas blurred, a change from focus (close to far) from 0 to 100 would completely reverse the focus area. The close background areas would become blurred and the far background areas would become sharp.

When you are satisfied with your depth of field effect, click *Apply* and then *OK*. In the case of the sample image, the result is as follows:



As you can see, the close background areas and the flamingos are sharp, i.e. in focus, whereas the more distant areas of the background are blurred.

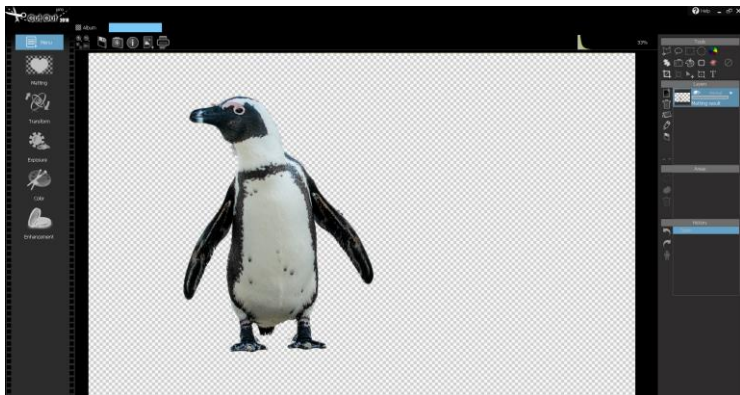
In addition, the cropping result, i.e. the two flamingos with transparent background, is now available in the layer area. So you can continue with the extracted object afterwards (edit, save etc.) if you don't like the soft background.

To display the flamingos without background, simply deactivate the background layer by clicking on the "Eye symbol":



6.3 Duplicate to Layer

In the post-matting menu, select *Duplicate to layer* to simply obtain the object just released in the matting menu as a separate layer without changing the background image or depth of field, and then edit (save, etc.) it further.



6.4 Split Layer and Delete Background

The functions *split layer* und *delete background* Layers cannot be chosen after an object has been cropped form a base layer. These two functions may only be applied when a Float-Layer has been edited in the Matting-Menu. A Float Layer is a layer that has been created from a base layer, for example when a selection has been made and copied from a base layer and then added as its own layer.

The function *split layer* separates the foreground image from the background image and creates two individual layers. The first layer contains the Matting result and the other the rest of the original image, of course with a hole from where the object was cropped.

The function *delete background* creates an individual layer for the newly cropped object and deletes the remaining background of the original im-

age. Should you only need the cropping result and not the background, this option is the right choice.

7. Edit images

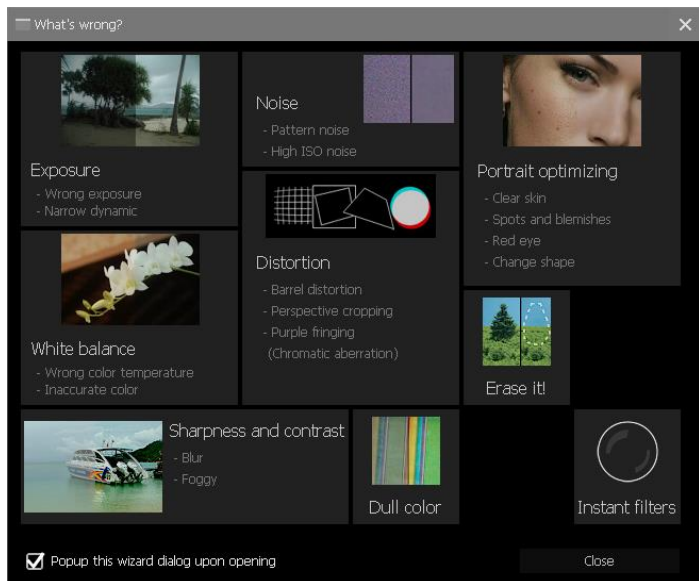
In **CutOut 8 professional** you will find a variety of editing options for your images and clipping results in addition to the options described for cropping objects. Different effects and filters are available for optimizing your images.

To edit an image, select it in the album mode you are in when you start **CutOut 8 professional**, as described in the User Interface chapter, and click the *Edit* button.



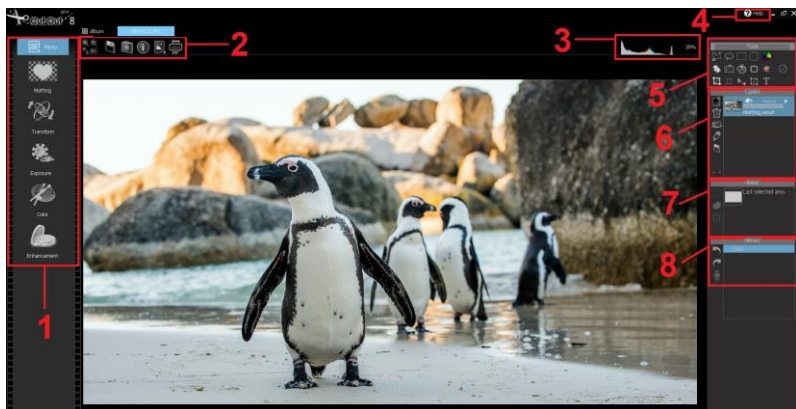
The image will now be opened in editing mode.

The Image Assistant appears first:



In this menu you can quickly find the right editing function for specific problems in your image. This assistant offers you quick solutions without a long search. All the functions in this menu can also be found in edit mode, so first we close the assistant and go through the functions in edit mode step by step. If you don't want this assistant to reappear every time you open an image in edit mode, simply uncheck the box at the bottom left of *Popup this wizard dialog upon opening*.

7.1 Editing Mode – Overview



- (1) *Editing Functions:* The editing functions Matting, Transform, Lighting, Color and Enhancement are further divided into different editing components and tools which will help you to optimize your image result. You can choose the editing function best suited for your project needs from this menu. Clicking the button *Menu* will allow you to select from all the editing options as well as further adjust various program settings, such as the language preferences.
- (2) *Additional Functions:* You can use the displayed icons to either adjust the image display size, save the image (diskette icon), call the image assistant (doctor's case icon), display the image properties (information icon), add an image as a new layer (image icon) or print the image (printer icon).
- (3) *Histogram:* This region displays the histogram of the current layer. The percentage amount on the right denotes the zoom level. Clicking on this percentage will allow you to change it.

- (4) *Help*: Refers you to this manual.
- (5) *Tools*: Here you will find the selection tools for specifying regions of the image for editing in addition to various other useful editing tools.
- (6) *Layers*: In the layers-window you can view all available layers. You can also delete, add, rename, relocate as well as adjust opacity levels and merge layers in this window.
- (7) *Areas*: Here you can save a selection made with a selection tool as a mask and apply it again to a selected layer at any time.
- (8) *Project History*: The project history shows you the steps you have performed so far. Here you can undo or restore individual steps. You can also save the sequence of steps as a schema file by clicking on the robot symbol and apply it to any number of other images via batch processing.

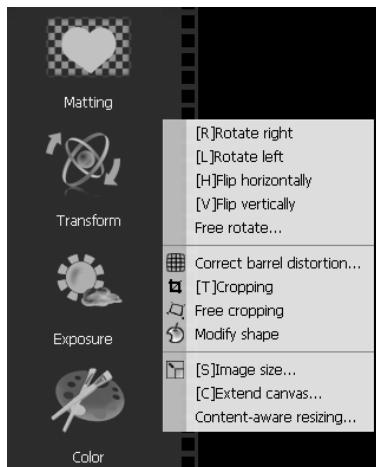
7.2 Editing Mode – Detailed View



7.2.1 Matting

Since **matting** has already been explained in detail, reference is made here to the corresponding chapters of this manual.

7.2.2 Transform



With the sub-functions of the **Transform** menu you can rotate, crop, mirror, change the image and canvas size or change the shape of your image.

Via **Free Rotate** you can rotate the base layer at any angle. Optionally, you can specify whether the result should be cropped automatically or not:



This function can only be applied to the base layer.

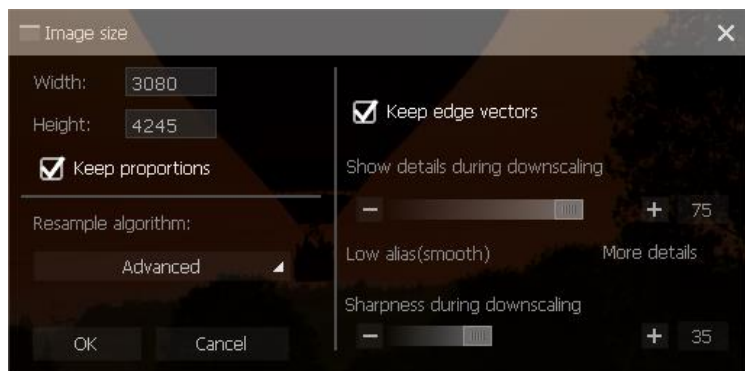
You can use **Correct barrel distortion** to compensate for convex or concave distortion in the image or, if desired, to create it:



With **Modify shape** you can use the brush tool to distort the shape of the image at any point. You can determine the size and strength of the brush using the brush settings in the upper image menu:



Image size determines the width and height of the image as well as other settings for the resizing process. As a resampling method, you have various more or less complex algorithms at your disposal for the recalculation of the image size.



With **Free Cropping** you can not only crop your image with a rectangular selection, but also create an arbitrary square by moving the four touch points and thus better adjust the area to be cropped:



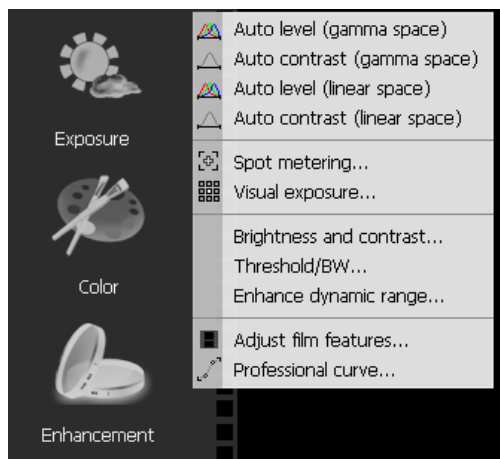
If you have moved the anchor points according to your wishes, click *OK* and the result will be accepted.

Via **Extend canvas** you can change the size of the desktop. The size of the image remains the same. In the right area you can set the position of the image on the canvas and select the background color. Click OK to confirm.

The **Content-aware resizing** allows you to change the length and width of your image. You can make presets using the menu on the left or edit your image by simply dragging it. Click OK to confirm.

7.2.3 Exposure

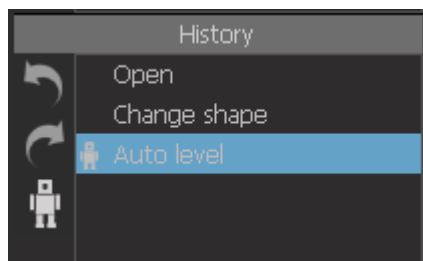
Often the exposure in photos is suboptimal. Either images are overexposed or underexposed. Classic examples are pictures taken against the light or pictures taken in dark areas. These problems can be counteracted in **Cut-Out 8 professional** with the exposure tools.



With the functions ***auto level (gamma space)***, ***auto contrast (gamma space)***, ***auto level (linear space)*** and ***auto contrast (linear space)*** you can have ***CutOut 8 professional*** automatically optimize the exposure with regard to contrast (auto contrast) and tonal values (auto level).

With the Gamma space option, the automatic optimization takes place as a gamma function and thus not linear, with the Vector Space option as a linear function.

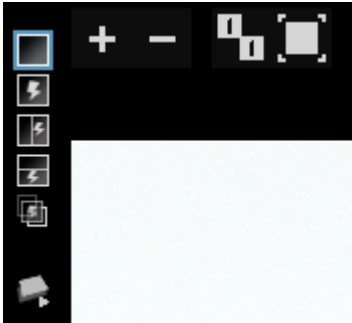
If your image is not optimal in terms of exposure, you can make improvements in this way. If you don't like the result, simply click *Undo* in the progress window:



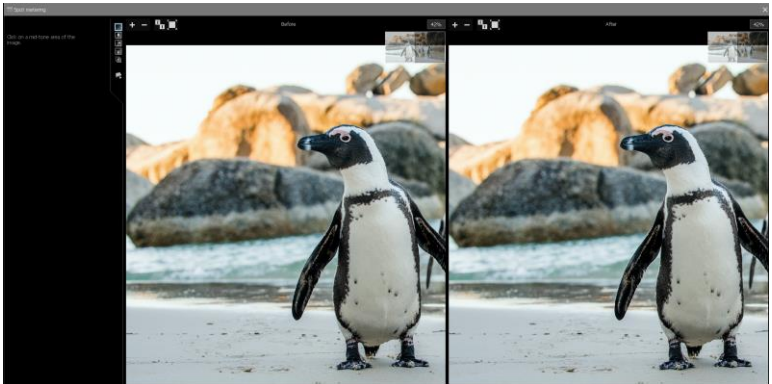
The option ***spot metering*** allows for a measurement of exposure levels at a designated point in the image.

The spot metering is done by clicking on a point in the image that you estimate to contain the mid tones. You will notice that when you click very dark areas of the image, the image is heavily overexposed and heavily underexposed in bright areas. Clicking an area with midtones, however, can cause a slight improvement in exposure.

To determine the areas more precisely, zoom in on the image, either by clicking on the magnifying glass icon, or simply by scrolling with the mouse wheel. You can change the formatting of the preview by clicking one of the options to the left of the plus icon:

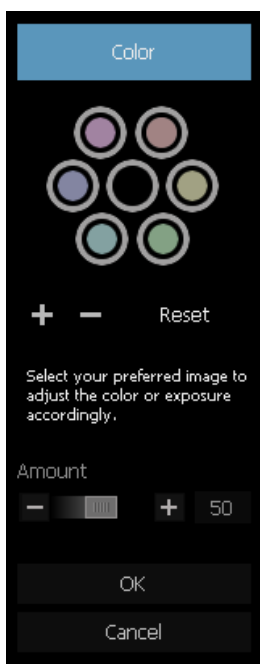
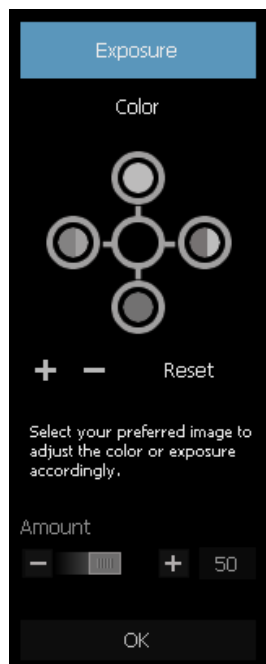


The symbol with the two ones shows the image in its true image size, i.e. 1:1; the symbol to the right adjusts the size of the image to the window and the symbol at the bottom left allows mixing the before and after image.



When you are content with your result shown in the display window, click on **OK**. If there is still need of work to be done, click *Cancel*.

Using **Visual exposure** you can easily view different color- and exposure-corrected images and select your favorite.



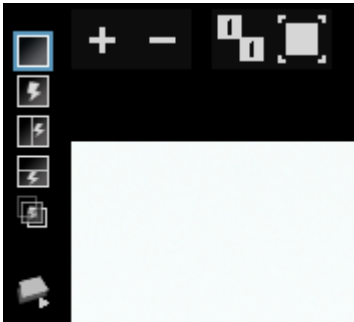
Clicking on either Exposure or Color will switch you between these two modes of correction. The color or brightness palette (depending on which one you are using) displays the current color tone or exposure effect being applied to your previewed images. Zooming in and out with the magnifying glass may help in recognizing the differences in each of the images.



When you have found an image with satisfactory exposure and coloration, click *OK* to apply the settings. Click *Cancel* if none of the images displayed is what you want.

Brightness and contrast allows you to adjust the brightness and contrast of the image manually using a slider.

The following display options are also available again:



With the plus/minus symbols you zoom in or out of the image, with the symbol with the two ones you display the image in its true image size, i.e.

1:1; the symbol to the right adjusts the size of the image to the window. With the lightning icons on the left you can change the layout of the preview view and the icon at the bottom left allows you to mix the before and after image.

When you have adjusted the brightness and contrast to your preference, click *OK*, otherwise click *Cancel*.

Now to the **Threshold/BW function**: This function converts your image to a black and white image and allows you to define various settings.

The *Threshold* slider determines at which threshold areas are displayed either white or black. For clarification: If you set the slider very high, i.e. very far to the right, bright regions of the original image will also appear black and only very bright regions will remain white.

Similarly, if you move the slider far to the left, very dark areas of the original image will appear white and only the extremely dark areas of the original image will remain black.

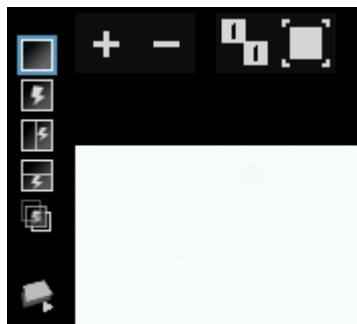
Use the slider *Transition level between black and white* to set the number of gray tones that lie between pure black and pure white. If you only want black and white, set this slider to zero.

The slider *Size of adaptive area* only becomes active when you set the *adaptive threshold* option under method above. With the *adaptive threshold* method, there is no global, fixed threshold value, but many local threshold values. Use the slider to determine the size of these local areas, each of which has its own threshold value.



In addition to the fixed threshold and the adaptive threshold, there are also preset methods *Diffuse* and *Halftone* for selection.

The following display options are also available again:



With the plus/minus symbols you zoom in or out of the image, with the symbol with the two ones you display the image in its true image size, i.e. 1:1; the symbol to the right adjusts the size of the image to the window. With the lightning icons on the left you can change the layout of the pre-view view and the icon at the bottom left allows you to mix the before and after image.

If the adjustments to your image meet your preferences, click OK, otherwise click Cancel.

Adjust film features simulates the internal camera settings to adjust the basic properties of the photo.



Use the slider *Exposure in EV* to adjust the global exposure value. Increase the global exposure by moving the slider to the right or decrease the exposure in the image by moving the slider to the left.

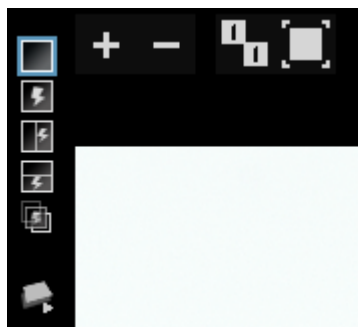
Use the *Contrast and Dynamic* slider to adjust shadows and highlights in the image. A high value brightens the dark, shaded areas and darkens areas with bright lights.

The *Color temperature* slider lets you determine whether the image should tend to be cool or warm. This gives it either a red or a blue tint.

Color boost/Saturation adjusts the saturation in the image. High values will increase the intensity of the colors in the image, while low values will decrease the color intensity. A value of zero will render the image colorless, i.e. in grayscale.

Use the *Grain* und *Sharpness* sliders to create a grain in the image or sharpen the image.

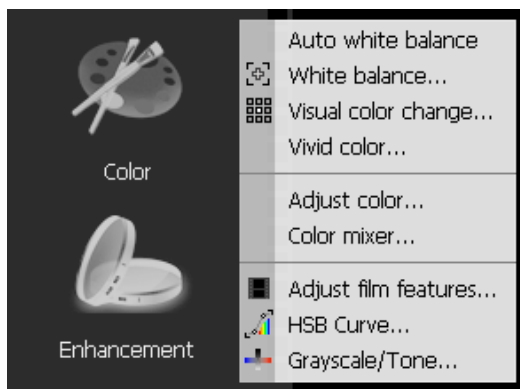
The following display options are also available again:



With the plus/minus symbols you zoom in or out of the image, with the symbol with the two ones you display the image in its true image size, i.e. 1:1; the symbol to the right adjusts the size of the image to the window. With the lightning icons on the left you can change the layout of the preview view and the icon at the bottom left allows you to mix the before and after image.

If the adjustments to your image meet your preferences, click OK, otherwise click Cancel.

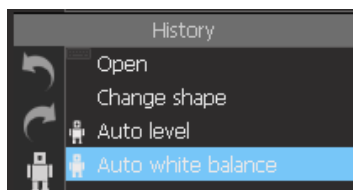
7.2.4 Color



With the color tools you can make all conceivable color corrections for your picture. Some of the tools overlap with those in the Exposure section.

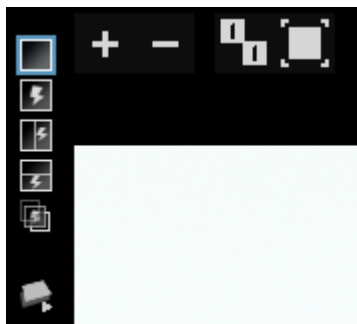
With the **auto white balance** you can leave the white balance completely to **CutOut 8 professional**. The color temperature of the light is automatically adjusted.

If you don't like the result, simply click *Undo* in the progress window:



If the automatic white balance function doesn't deliver the optimal result, simply choose **white balance** to apply it by hand. Now click on an area of the photograph that you want to appear white or gray. The white balance is applied immediately and your result should appear in the preview window.

The following display options are also available again:

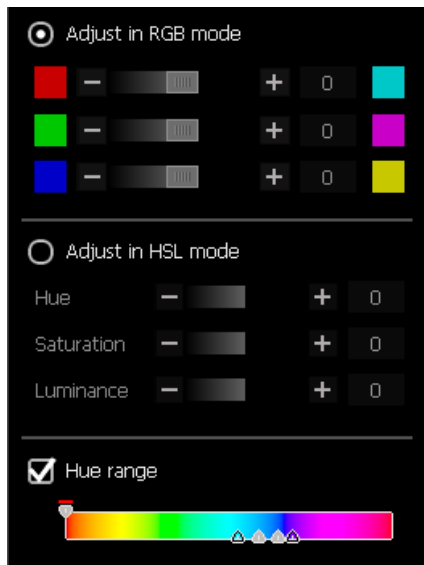


With the plus/minus symbols you zoom in or out of the image, with the symbol with the two ones you display the image in its true image size, i.e. 1:1; the symbol to the right adjusts the size of the image to the window. With the lightning icons on the left you can change the layout of the preview view and the icon at the bottom left allows you to mix the before and after image.

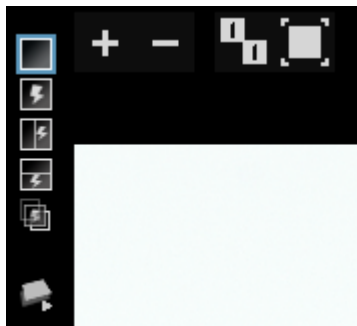
If the adjustments to your image meet your preferences, click OK, otherwise click Cancel.

The ***visual color change*** Change tool was previously introduced in the Brightness Tools chapter. Please refer to this chapter more for information about this function.

The function ***Adjust Color*** allows you to individually adjust the color scheme of any one of the images. Before proceeding, you can choose to edit using either RGB or HSL. Options in the Hue Range bar make it possible to exclude specific tonal ranges from being affected by further changes. These can be defined by adjusting values along the slide control.



The following display options are also available again:



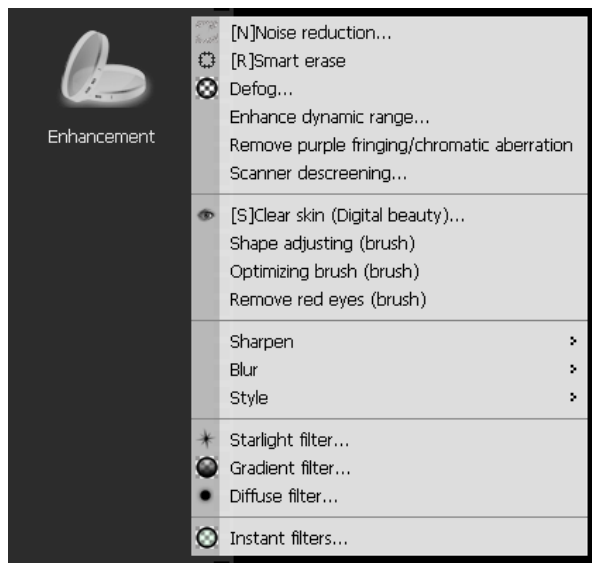
With the plus/minus symbols you zoom in or out of the image, with the symbol with the two ones you display the image in its true image size, i.e. 1:1; the symbol to the right adjusts the size of the image to the window. With the lightning icons on the left you can change the layout of the pre-

view view and the icon at the bottom left allows you to mix the before and after image.

If the adjustments to your image meet your preferences, click OK, otherwise click Cancel.

The **Adjust film features** function was introduced already introduced previously in the manual. Please refer to the chapter covering the various exposure tools and functions for more information.

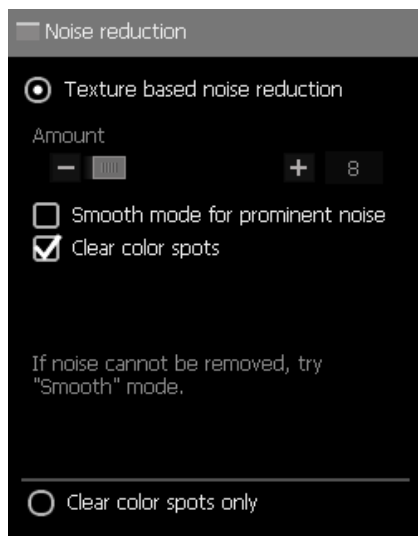
7.2.5 Enhancement



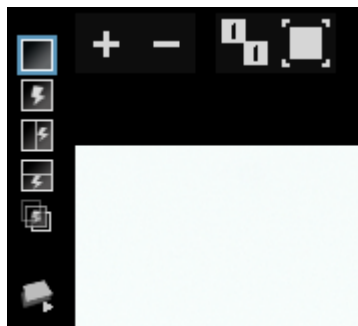
These Enhancement Tools deliver plenty of possibilities to optimize your image, remove flaws and make necessary corrections.

The function **Noise reduction** removes visual distortion from your image improves the quality of your image. The *Amount* slider controls the strength of the noise reduction. If there happens to be a good deal of visual

distortion present in your image, check the *smooth mode for prominent noise* box in the noise reduction menu. The clear color spots option can be applied to reduce or remove concentrated disruptions. If you only want to remove color spots, check the *clear color spots only* box.



The following display options are also available again:

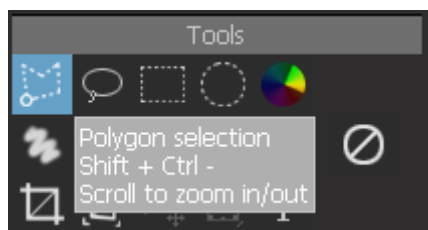


With the plus/minus symbols you zoom in or out of the image, with the symbol with the two ones you display the image in its true image size, i.e.

1:1; the symbol to the right adjusts the size of the image to the window. With the lightning icons on the left you can change the layout of the preview view and the icon at the bottom left allows you to mix the before and after image.

If the adjustments to your image meet your preferences, click OK, otherwise click Cancel.

Using **Smart erase CutOut 8 professional** automatically removes disturbances from your image. However, this requires that you first select the image area in which the disturbance occurs with the selection tool. Select a selection tool from the Tools window and select the disturbance in the image by clicking the area step by step. Double-click to complete the selection:



In this case a disturbing stone is to be removed from the ground, so it is selected with the selection tool:



After selection, the *smart erase* tool is chosen; this tool is also available in the selection menu represented by a small circle-symbol:



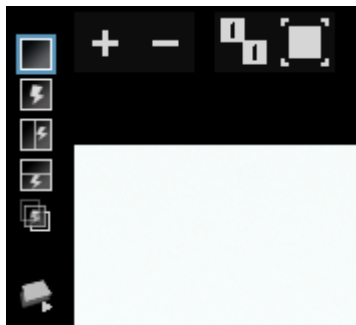
This is the result:



The stone has thus been “intelligently” removed and the remaining hole filled with the surrounding ground pattern.

This function is well suited for removing distracting folds in clothing or skin impurities when editing portraits.

The following display options are also available again:

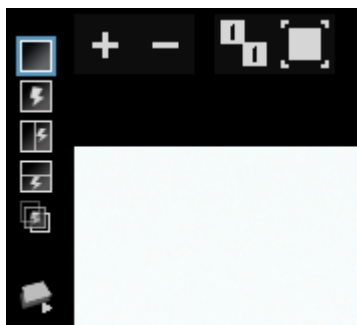


With the plus/minus symbols you zoom in or out of the image, with the symbol with the two ones you display the image in its true image size, i.e. 1:1; the symbol to the right adjusts the size of the image to the window. With the lightning icons on the left you can change the layout of the preview view and the icon at the bottom left allows you to mix the before and after image.

If the adjustments to your image meet your preferences, click OK, otherwise click Cancel.

The **Defog** function controls the strength of the filter using a slide control. This tool helps to remove bothersome patchy areas from your photographs.

The following display options are also available again:



With the plus/minus symbols you zoom in or out of the image, with the symbol with the two ones you display the image in its true image size, i.e. 1:1; the symbol to the right adjusts the size of the image to the window. With the lightning icons on the left you can change the layout of the preview view and the icon at the bottom left allows you to mix the before and after image.

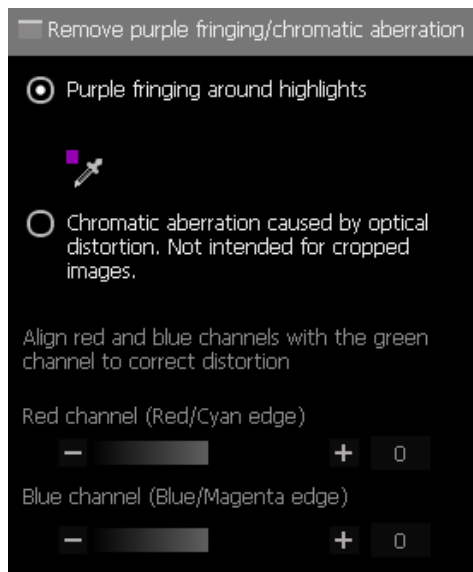
If the adjustments to your image meet your preferences, click OK, otherwise click Cancel.

The **Enhance dynamic range** tool was previously introduced in the chapter on the different Exposure Tools available in **CutOut 8 professional**. Please refer back to this chapter for more information about this function.

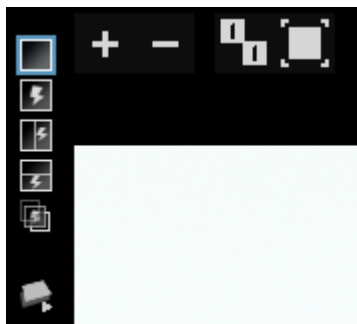
The **Remove purple fringing / chromatic aberration** tool removes purple edge outlines (purple fringing) sometimes present around highly lit regions or colored blurred edges (chromatic aberration).

For purple ringing, simply use the pipette tool to select the purple areas in the image that were caused by purple ringing. The correction will then be performed automatically.

When using the *Chromatic Aberration* option, the slide control shown below can be used to align the *red and blue color channel* values to ultimately to reduce the effect



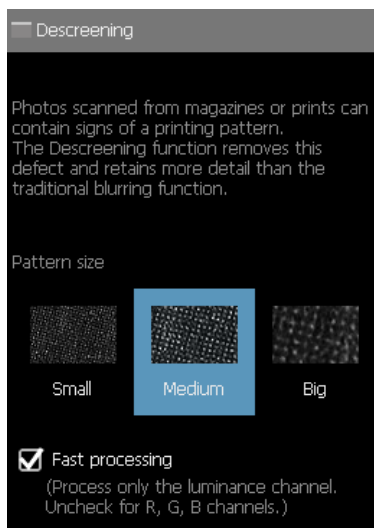
The following display options are also available again:



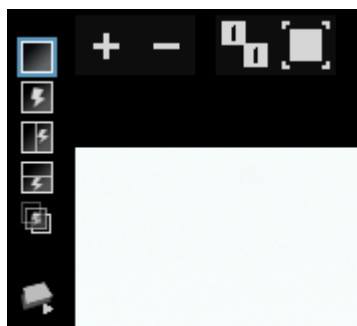
With the plus/minus symbols you zoom in or out of the image, with the symbol with the two ones you display the image in its true image size, i.e. 1:1; the symbol to the right adjusts the size of the image to the window. With the lightning icons on the left you can change the layout of the preview view and the icon at the bottom left allows you to mix the before and after image.

If the adjustments to your image meet your preferences, click OK, otherwise click Cancel.

The ***Scanner descreening*** function has the ability to remove grid-like patterns from scanned images, such as those taken from magazines. Simply choose the according pattern size and the process will begin.



The following display options are also available again:



With the plus/minus symbols you zoom in or out of the image, with the symbol with the two ones you display the image in its true image size, i.e. 1:1; the symbol to the right adjusts the size of the image to the window. With the lightning icons on the left you can change the layout of the preview view and the icon at the bottom left allows you to mix the before and after image.

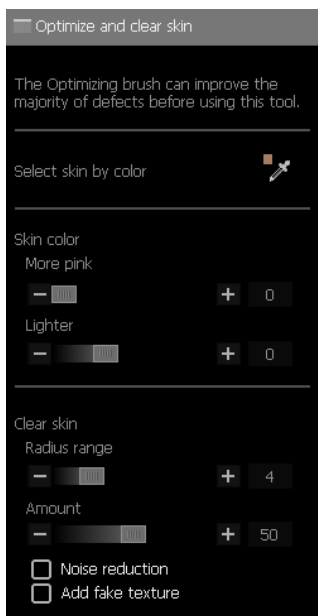
If the adjustments to your image meet your preferences, click OK, otherwise click Cancel.

The **Clear Skin (Digital beauty)** tool allows for skin enhancement when working with portrait photography. Before apply this tool, be sure to remove rather noticeable imperfections with the *Smart Erase* tool previously introduced in this chapter

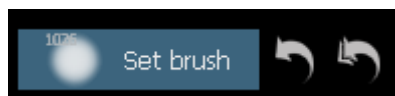
The pipette tool can now be used to select the skin tone of the region containing the imperfections you wish to improve.

The *More Pink and Lighter* sliders can be used to adjust the skin tone or to add a bright rose color complexion.

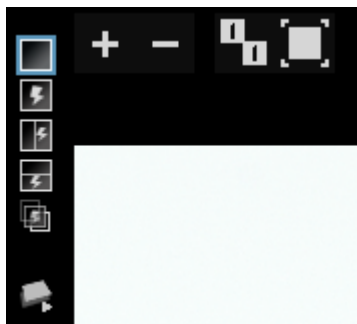
The *Clear Skin* function can be used to clear up skin imperfections by designating the strength and radius of the affected region. To further improve your result, noise reduction may also be applied to remove unwanted variations in brightness and color variation.



The **Shape adjusting (brush)** allows for the free distortion of your image. Using the brush-tool, simply hold down the left mouse button and glide your cursor across the image. Brush-settings can be further adjusted in the window on the upper left-hand side of the screen.



The following display options are also available again:



With the plus/minus symbols you zoom in or out of the image, with the symbol with the two ones you display the image in its true image size, i.e. 1:1; the symbol to the right adjusts the size of the image to the window. With the lightning icons on the left you can change the layout of the preview view and the icon at the bottom left allows you to mix the before and after image.

If the adjustments to your image meet your preferences, click OK, otherwise click Cancel.

The **Optimizing brush** is almost identical to the *Smart Erase* tool introduced in this chapter. However, with this tool, selections of regions containing elements in need of improvement are not made with one of the various selection tools, rather with the brush tool.

The **Remove red eyes (brush)** also utilizes the brush tool for selection purposes. Simply paint over the regions containing red-eye to remove these from the image.

Sharpen offers many possibilities for sharpness enhancement. The *Sharpen* function automatically sharpens the entire image. *Shrink Edge* automatically recognizes and reduces all edges, in turn also sharpening the photograph. *Sharpen texture* enhances the overall structure of the image.

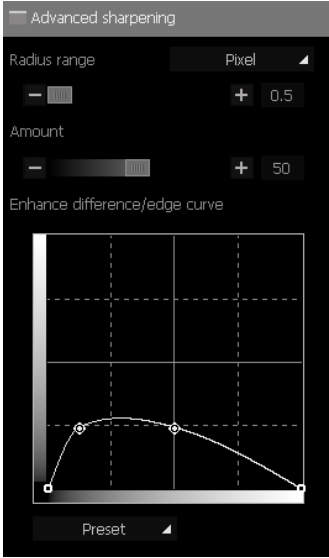
When using *Advanced Sharpening*, a menu will appear displaying options with which you can manually determine sharpness levels within the image.

With the slide control you can designate the intensity and radius of the sharpening effect.

Manually reducing edges can be done by designating anchor points along the curve. These points can always be relocated at any time. An alternative option would be simply choosing one of the available preset options.

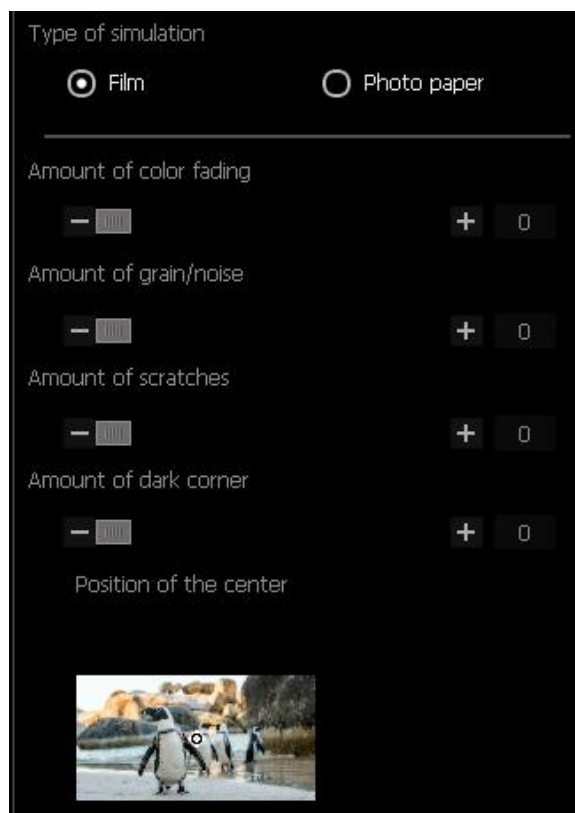
You can perform a manual edge reduction using a curve fitting. Click on any point in the curve to add further handle points that you can then move as required. Alternatively, select one of the displayed presets.

Focus sharpen is used to make changes to the pixel plane that are not visible at first glance but produce better results than conventional sharpening. This new feature is based on “deep learning”.



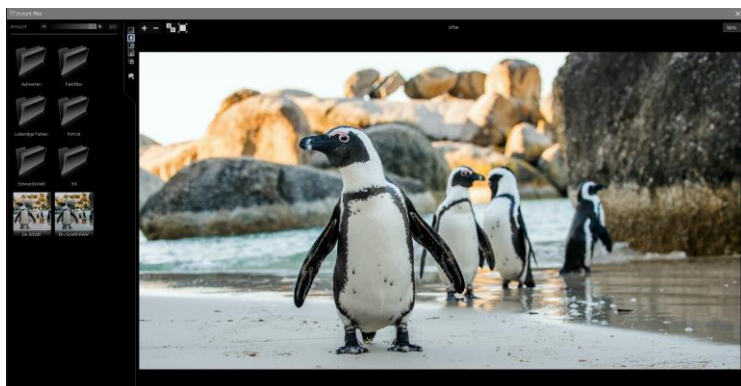
The **Blur tool** gives you access to an even greater number of editing possibilities: *Blurring* softens the image automatically. The *Gauss Blur* allows you to establish the function’s active radius and the *Lens Blur tool* has even

more adjustment options, all of which are thoroughly covered in the Post-Matting Chapter. This chapter deals with the various functions available when using the *Lens blur tool*.



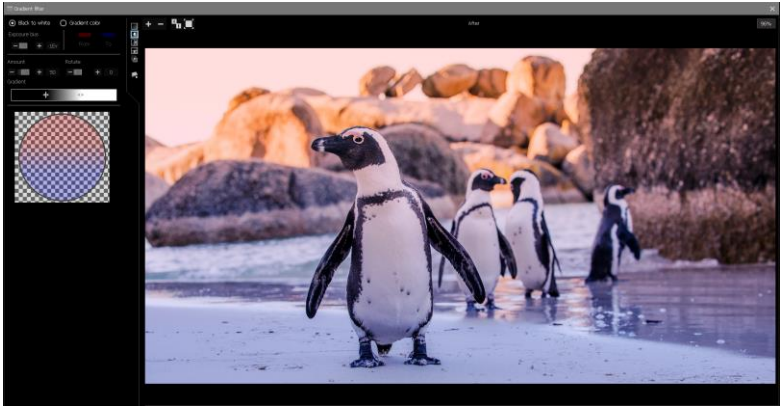
Next to the option **Style** you will find two choices: *Add grain/scratches/dark corner* and *real sketch*. Click on image distortions and you can add noise and scratches to the image using various sliders. The drawing mode *real sketch* is recommended for photos with clear outlines and few colors. Large image files should be scaled smaller to increase processing speed.

CutOut 8 professional offers an additional collection of filters which can be applied to your images.

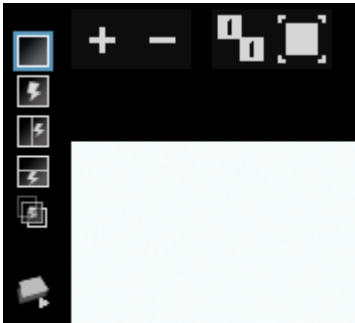


Instant Filters: Quickly and easily adapt and optimize all your photos with the **Instant Filter** collection. Clicking on any of the filters at the left will display your image with this filter as a preview. *Apply* will adopt the filter effect you've selected.

Gradient Filters: With the gradient filter you can add gradients to your photos - either black and white or colored. You can set the strength of the filter and the angle manually using the two sliders. You can also freely define the color range. The circle below the color bar shows the effects of the settings you have made.



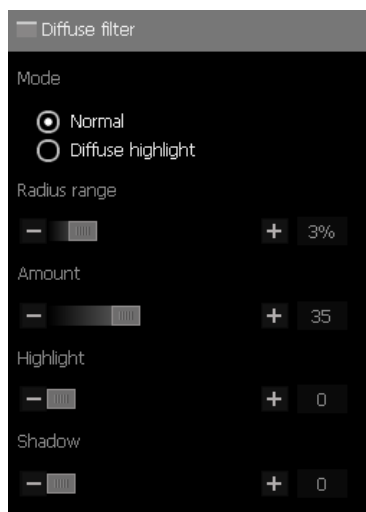
The following display options are also available again:



With the plus/minus symbols you zoom in or out of the image, with the symbol with the two ones you display the image in its true image size, i.e. 1:1; the symbol to the right adjusts the size of the image to the window. With the lightning icons on the left you can change the layout of the pre-view view and the icon at the bottom left allows you to mix the before and after image.

If the adjustments to your image meet your preferences, click OK, otherwise click Cancel.

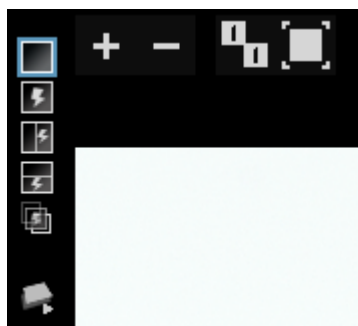
Diffuse Filter: The **Diffuse Filter** reduces the sharpness and adds a blurred effect to your photograph. The filter settings can be adjusted to encompass the photograph in its entirety (*Normal*) or limit the effect to the visible light (*Diffuse-Highlight*) in the image. In addition, the sliders for *Intensity*, *Radius*, *Light* and *Shadow* can be further adjusted to precisely achieve the desired effects.



Starlight Filter: This filter allows you to add additional highlights around the edges of bright regions in your photograph. The effect properties including the amount, radius and intensity can be altered by utilization of the slide controls in the filter menu. Here you will also find a variety of additional lighting effects and the mask rotation option. Also available is the option whether to display light in the image in white or rainbow tones.



The following display options are also available again:



With the plus/minus symbols you zoom in or out of the image, with the symbol with the two ones you display the image in its true image size, i.e. 1:1; the symbol to the right adjusts the size of the image to the window. With the lightning icons on the left you can change the layout of the preview view and the icon at the bottom left allows you to mix the before and after image.

If the adjustments to your image meet your preferences, click OK, otherwise click Cancel.

7.3 Tip for the Edit Mode

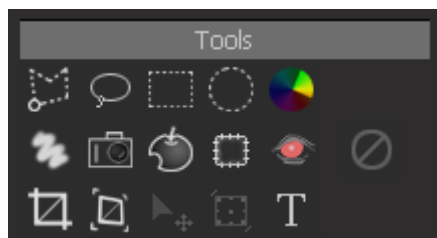
In **CutOut 8 professional** you have the ability to simultaneously open multiple images for editing. To do this, select an additional image from the Album folder and click on Edit after already having opened the first in Editing Mode.



7.3.1 Tools

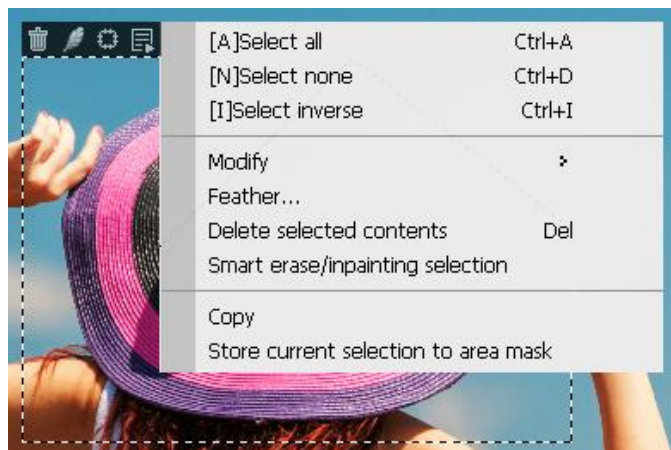
On the right side of the Menu in Editing Mode, you'll notice four different windows labeled *Tools*, *Layers*, *Areas* and *History*.

You have the following options from the tool collection at your disposal:



The first row contains the selection tools used to designate individual regions within your images. These include the polygon tool, the Free Select

tion tool, the rectangle and circle tools as well as the Color Selection tool—used to designate regions according to their color tones. After selecting the polygon tool, for example, click on the desired region and end your selection with a right-click of the mouse. You can continue editing this selection with any of the additional Editing tools at your disposal. In the area surrounding your selection, a dropdown will appear providing you with further editing options:



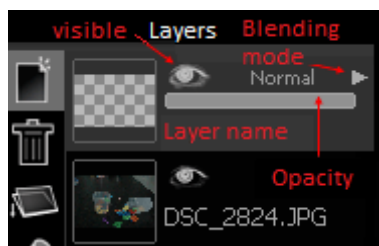
In the second line you will find from left to right:

- **Free Paint Tool:** This tool allows you to paint in any color you wish. Furthermore, the brush settings can be adjusted at the top of screen.
- **Camera paint/Copy Pixels:** Once you have chosen this tool, determine the brush settings to your liking at the top of the screen. Now, click on any point in the image you wish to serve as the pixel source. This pixel grouping will be copied wherever you paint throughout the picture. This tool serves as an appropriate solution for improving or fixing imperfect areas in your image with like-natured pixel groupings.

- **Modify Shape:** This tool, represented by the apple-symbol, enables you to distort your image by simply painting over desired areas.
- **Repair:** Select this tool and paint over a region you wish to improve. This area is enhanced according to the properties of the immediate surroundings. Just like that you can quickly and easily remove small imperfections and problem areas within your image.
- **Remove red eyes:** Select this tool and paint over areas containing red-eye to easily remove the red cast.

In addition to the cropping and trimming options mentioned in the chapter covering the various transformation functions, you can use tools from the third row to add text to your images. To do this, first click on the area in which you want the text to appear. Following this, the text settings menu will appear where you can format the text and select the font. Your text input will appear as its own layer in the Layer window allowing for it to be edited and transformed or for filters to be applied, just as any other layer type.

7.3.2 Layers



The Layers Window displays all layers available for editing. Opening an image in Editing-Mode will result in that image being the only layer available for editing. Once text is added, image regions are copied or cropping results

are created, these will all appear in the Layers section and can be further selected or edited with one click of the mouse.

The left side of the Layers window contains the options concerning the addition of new layers, the deletion and merging of selected layers as well as renaming and saving functions for existing layers. The two small arrows at the bottom allow you to change the order in which the layers appear. Layers situated “higher” on the list will cover layers lower down. The keyboard combination *STRG + C* and *STRG + V* allows for layers to be copied and pasted, in other words duplicated.

After selecting a layer, clicking the eye-symbol will either show or hide this specific layer. The tab below controls the opacity settings for the respective layer (not available for base layers). Reducing this value makes the layer more transparent. The dropdown menu for Merging Layers can be accessed by clicking on the *Normal* option (also unavailable with base layers).

The following options are available when merging layers:

Darken: According to the color information present in each color channel, this option designates darker colors (base or mix color) when determining the color result. Pixels brighter than the mix color are replaced and pixels darker than the base color remain un-modified.

Lighten: According to the color information present in each color channel, this option designates brighter colors (base or mix color) as the color result. Pixels darker than the mix color are replaced and pixels brighter remain unmodified.

Multiply: This option multiplies the base color by the mix color according to the color information present in each color channel. The color result is always a darker one. Multiplying a color with black always results in a black color result and multiplying a color by white has no effect on the base color. When painting with a color other than black or white, colors will darken with each consecutive stroke. This effect resembles the effect of overlapping colors when drawing with multiple highlighters.

Screen: The pixel values in each of the layers is inverted, multiplied, and inverted once again. This is the reverse effect of the Multiplication mixing mode. This results in a brighter picture.

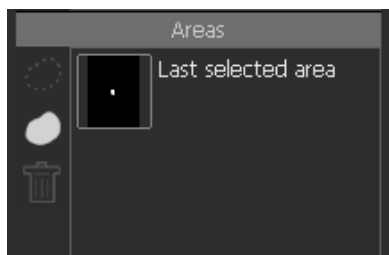
Overlay: The Overlapping Mode is a combination of multiplication and division. The deciding factor for this mode is the top layer. However much brighter the colors in the top layer are determines how bright the colors in the mid tone area will appear. The opposite can also be applied: However darker the colors in the top layer appear, all the more darker the mid tones in the bottom layer will appear. In contrast with Multiplication Mode, the Overlapping function doesn't have such a darkening effect.

Hard Light: This mode performs a multiplication, or in some cases, a negative multiplication, of the colors (independent of the mix color). The effect resembles the effect of a spotlight shone directly on the image. If the mix color (light source) has a brightness level exceeding that of 50% of gray, the image will be brightened. If the mix color has a brightness level darker than that of 50% of gray, the image will be darkened (similar to the after-exposure effect).

Soft Light: Colors are either lightened or darkened depending on the mix color. The effects resembling the indirect illumination of the image with a spotlight. If the mix color (light source) has a brightness level exceeding that of 50% of gray, the image will be brightened. If the mix color has a brightness level darker than that of 50% of gray, the image will be darkened (similar to the after-exposure effect). Mixing using pure white or black will not result in pure white or black, rather a relatively darker or lighter outcome.

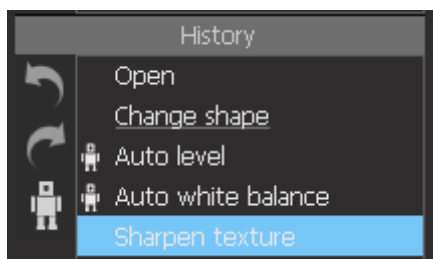
Difference: This mode subtracts the color (base or mix color) possessing the lowest brightness level with the color from that possessing the highest brightness level according to the color information present in each channel. In this case, mixing with white results in an inversion of the color values of the base color. Mixing with black yields no change.

7.3.3 Areas



In the Area window, you can save areas that you have selected with one of the selection tools and apply them again later. Click on the recycle bin icon to delete the selected area from the clipboard.

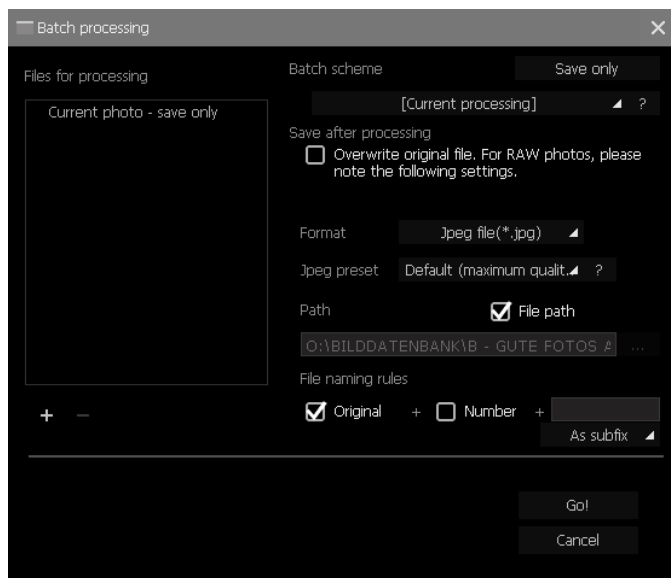
7.3.4 History



The Project History displays all changes made to your project and allows you to go back to any previous stage of editing and redo or undo certain changes made during your work process. You can save your project history as a Scheme-File (.Idscm Format) and apply it to further projects at a later date.

Furthermore, these editing steps can be immediately applied to any number of additional image (batch processing).

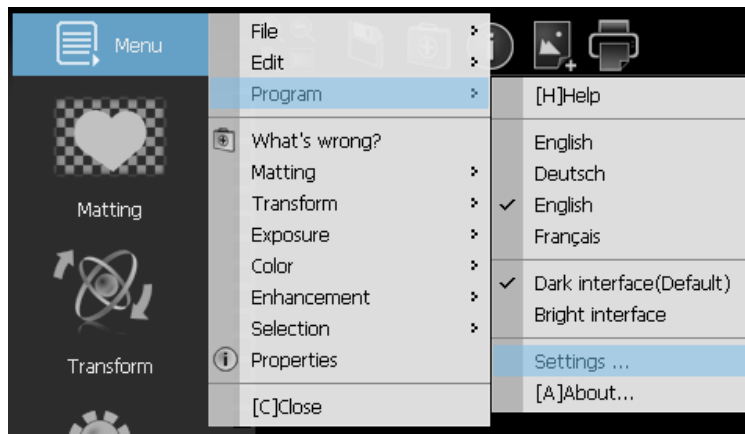
This saves a lot of work time, given you want to apply the same filter to a number of pictures, for example:



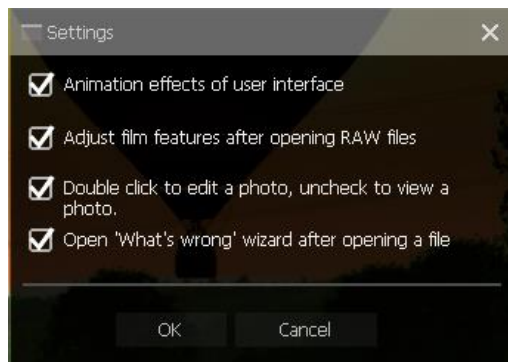
By clicking the '+' symbol, you can add additional images to which the processing steps will be applied. The right side of this window offers options for designating the save file format, save file location, name as well as quality. If all settings have been adjusted to your content, you can begin batch processing by clicking on *Go!*.

8. Program Settings

Clicking the *Menu* icon in Album mode or Edit mode opens a drop-down menu with several options.



Clicking on *Program* will allow you to change the language settings. Selecting the *Settings* option under the *Program* tab will open the *Program Settings* menu:



Here you can define some settings for **CutOut 8 professional**. For example, the check mark in *Adjust Film Features* after opening a RAW file ensures that when you load an image in RAW format, this image is first opened in the menu for *Adjust Film Features* and not directly in Edit mode. You can also choose between a light and a dark user interface.

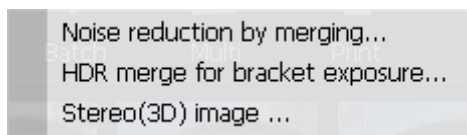
9. Creating HDR and Stereoscopic Images

CutOut 8 professional offers the possibility to create HDR images by combining individual photos from a bracketed series. The dynamic range is thereby expanded and the potential to create absolutely awe-inspiring photos emerges. You'll need at least two photographs, at best three, from an exposure series—in other words, an image taken of a subject at different levels of exposure.

Select the photos (at least two) containing the various exposure levels from Album Mode and click *Multi* in the upper menu bar:



Now choose the option *HDR merge for bracket exposure* to begin:



After the images are successfully selected, the following window will appear:



Before the image appears in Editing Mode, the Fine Adjustment Menu for HDR images will open:



This menu provides slide control adjustment for low, mid tones and light as well as possibilities for potential image enhancement.

The function *Multiple* allows for additional images to be merged in order to reduce disturbances and create stereo (3D) images saved in MPO-format that can be later viewed in three-dimensional form with a pair of 3D-glasses.

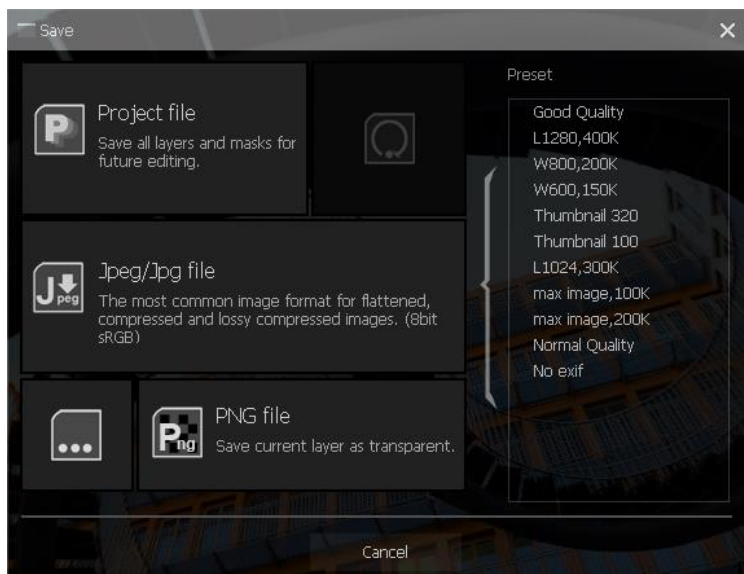
In order to successfully create MPO-images, you must ensure to take two shots of your subject, whereby the camera positioning during the second shot is slightly horizontally offset, preferably by a distance of 5-10cm. Only in this way can a stereo image be successfully created.

10. Opening and Saving Files

CutOut 8 professional supports:

- Opening of common image formats including: Jpeg, Gif, Tif, TGA, Pcx, Png, Bmp as well most camera RAW-Formats.
- Camera RAWs: *.raw, *.nef (Nikon), *.cr2 (Canon), *.crw (Canon), *.orf (Olympus), *.mrw (Minolta), *.raf (Fujifilm), *.pef (Pentax), *.dcr (Kodak), *.srf (Sony), *.erf, *.dng (Adobe), *.arw (Sony), *.rw2 (Lumix) ...

The program supports the output formats Jpg, Png, Tif, Bmp, and many more.



☐ Preview and save jpeg file

Preset

Customize
 ▲

Save ...
 Delete

Jpeg compression parameters

Quality

-

 +
 90

Adjust by file size ...

☐ High quality color

?

Auto

☐ Adaptive

?

All EXIF
 ▲

Optimize compression

Blur

-

 +
 0

☐ Optimize more

?

Size control

Max image size

No change
 ▲
 1024
 px

 Max file length

200
 KB

Unlimited file length
 ▲
 ?

Compression preview

Original file: 105915.0KB, 1.0:1

Current file: 5313.6KB, 19.9:1

 Final jpeg quality: 90%

- Quality**
 The Jpeg compression quality.
- Adjust File Size**
 Enter a desired file size and the program will try to create a corresponding quality with the settings.

- **High Quality**
Use YUV 1:1:1 for Jpeg decoding.
- **Adaptive**
Use the adaptable quantum table for Jpeg decoding. This may reduce the file size.
- **Exif Data**
Choose whether you want to keep all, a few or no EXIF data in the file. EXIF data requires about 1-64K of the file size.
- **Compression Optimization**
The program will try to reduce the file size by optimization.
- **Maximum File Size**
Set the limit of the image size. If this limit is exceeded, the image is automatically reduced.
- **Method**
If the final file size exceeds the maximum file size, the program selects a method to reduce the file size. The method includes downscaling the image size or reducing the quality. The reduction process is automatic.

11. Plug-ins

In addition to the standalone-software **CutOut 8 professional** also provides access to an array of Photoshop and Photoshop Elements plug-ins.

- Chromakey Matting
- Inside and Outside Outline Matting
- Edit

You can also install the plug-ins later by copying the plug-ins into the Adobe Plug-in folder. To do this, click on the Open Plug-ins folder on the start screen, select the plug-in versions you need (32 bit, 64 bit) and copy them to the 'Plug-in' folder of Photoshop or any other compatible program. The plug-ins support 8bit and 16bit per channel, RGB color space as input.

In order to use the three plug-ins 'Chroma Key Matting', 'Inside/Outside Outline Matting' and 'Edit' in Photoshop, open an image in Photoshop and select **Filter → Cut Out** in the Menu, followed by your desired **CutOut 8 professional** filter selection to begin. After you are finished editing, click either *Apply* or *Cancel* to return to Photoshop with your result.

Hotline/Support

Contact the **FRANZIS Customer Service Team** for questions about installation, problems or disruptions concerning this software product.

E-Mail: support@franzis.de

Telephone (Monday - Friday 12-18:00): +49 (0)180 30 02 644
(0,09 EUR per Minute from German Landlines, mobile rates may vary)

Telefax: 0180 300 26 45 (0,09 EUR per Minute from German Landlines, mobile rates may vary)

Please bear in mind that your inquiries can only be handled by the FRANZIS Customer Service Support Team. This is how we can continue to make lasting improvements in our service quality while answering your questions quickly and professionally.

Customer Service quick and easy:

Have important information concerning your PC system and product ready:

- Product Name
- Product-**ISBN-Number (These can be found on the back side of the product packaging located above the bar code).**
- Operating System of your PC
- Information about your PC's Configuration

Copyright

Franzis Verlag GmbH has prepared this product with the greatest possible care. Please read the following conditions:

All the programs, routines, controls, etc., contained on this CD are protected by their respective authors or distributors as mentioned in the respective programs. The purchaser of this CD is authorised to use those programs, data or data groups that are not marked as shareware or public domain for his/her own purposes within the provisions of their designated use. He/she is authorised to use programs or parts of programs that are marked as shareware, freeware or public domain within the restrictions given by the respective programs or parts of programs.

A reproduction of programs with the intent of distributing data media containing programs is forbidden. Franzis Verlag GmbH holds the copyright for the selection, arrangement and disposition of the programs and data on this CD.

The data and the programs on this CD has been checked with the greatest possible care. Considering the large quantity of data and programs, Franzis assumes no warranty for the correctness of the data and a flawless functioning of the programs. Franzis Verlag GmbH and the respective distributors do not undertake neither warrant nor legal responsibility for the use of individual files and information with respect to their economic viability or their fault-free operation for a particular purpose.

Additionally, there is no guarantee that all the included data, programs, icons, sounds and other files are free to use. Therefore the publisher cannot be held liable for a possible breach of third party copyrights or other rights.

Most product names of hard- and software and company names and labels mentioned in this product are registered trademarks and should be treated as such. The product name used by the publisher are as the manufacturer describes them.

© 2018 Franzis Verlag GmbH, Richard-Reitzner-Allee 2, 85540 Haar bei München