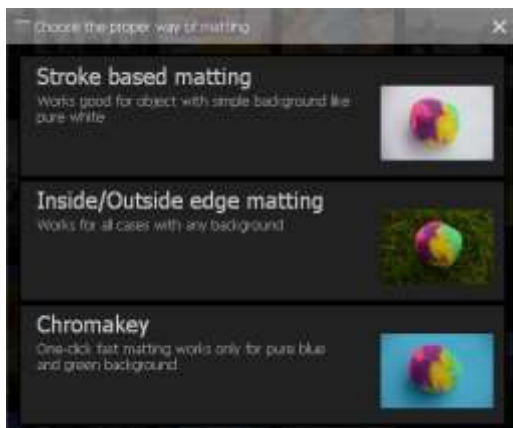


CutOut 6 professional – Quick Start Guide

<u>1.</u>	<u>INTRODUCTION INTO OBJECT CROPPING</u>	<u>2</u>
<u>2.</u>	<u>WHICH CROPPING METHOD IS THE BEST ONE?</u>	<u>2</u>
<u>3.</u>	<u>INSIDE/OUTSIDE EDGE MATTING</u>	<u>4</u>
<u>4.</u>	<u>OPTIMISING RESULTS</u>	<u>10</u>
<u>5.</u>	<u>APPLYING MATTING RESULTS</u>	<u>15</u>
<u>6.</u>	<u>CHANGING THE BACKGROUND IMAGE</u>	<u>19</u>
<u>7.</u>	<u>CHROMAKEY MATTING</u>	<u>25</u>
<u>8.</u>	<u>CROPPING USING OBJECT CONTOURS</u>	<u>30</u>

1. Introduction into Object Cropping

To crop an object and remove it from an image, first select the image from **Album-Mode** you wish to work with, locate the Crop-Symbol in the Menu above and choose a Cropping Method:



2. Which Cropping Method is the best one?

There is no right or wrong answer to this question. Choosing the most appropriate cropping method is 100% dependent on the material you are working with:

If you would like to crop an object not positioned against an evenly colored or evenly defined backdrop, as most often the case, then we recommend you choose **Inside/Outside Edge Matting**. With the help of the Polygon tool, the inside region (the object being

CutOut 6 professional – Quick Start Guide

cropped) as well as the outside region (the background being cut out) can be selected, therefore enabling the object to be cropped.

If you would like to crop an object that possesses an evenly colored background (optimally blue or green) which is clearly discernable from the object, select the option **Chromakey Matting**. This method is well suited for use on portraits with monotone backgrounds or landscape shots against a clear blue sky, for example, from which an object can be cropped.

The **Cropping using object contours** method presents itself as an appropriate solution in cases in which none of the two previously mentioned methods seem to yield the best result, or when areas within the cropped object need to be removed quickly and precisely. When this method is chosen, the image is divided into an array of small puzzle pieces, or segments, all of which can be designated as either parts of the inside or outside region with just one mouse-click. Segmented cropping takes into account brightness, colors and contours to the same degree and yields a clear-cut result. For those who are looking to crop objects from images taken in front of evenly colored backgrounds, using these calculated segments can be seen as the best editing method. Like items you want to sell on eBay that you wouldn't photograph in a photo studio, but rather on the kitchen table.

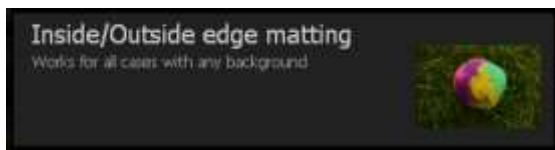
In most cases, the lighting is not always the best to allow for an effective editing job by use of **Chromakey-Matting** alone. Implementing **Object Contour Cropping** in such a situation will undoubtedly take your project the furthest. The effectiveness of this method can especially be seen when cropping an object situated against a white, grey or black backdrop.

When working with rather large images containing many segments, the calculation may take a little longer.

3. Inside/Outside Edge Matting

Method recommended for use when working with multicolored backgrounds—or when background tones appear similar in nature to those of the object in the foreground.

Inside/Outside Edge Matting is the right choice when it comes to cropping objects from images, which do not possess a strictly monotone background or are similar in color to the background itself. Select the Image you wish to crop from Album Mode and choose the middle option from the following window.



The designated image should now appear in the Inside/Outside Edge Matting Menu as shown:

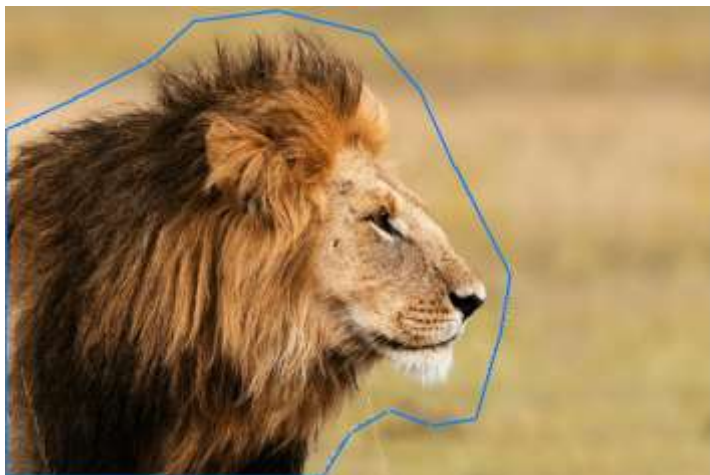
CutOut 6 professional – Quick Start Guide



Since the background coloration is in this case not only varied, but also quite similar to that of the lion's fur, Chromakey Matting would most likely not deliver the best possible result. For this reason, it makes the most sense to go about separating the object in the foreground from the background by hand. To get started, locate the Menu bar on the right side and select the **Polygon tool** for the outside selection from the upper left-hand corner. Now, draw an outer-edge outline around the lion's entire head.



CutOut 6 professional – Quick Start Guide



This does not need to be done with pinpoint precision. Most important when drawing the outline is making sure no point falls inside the object itself.

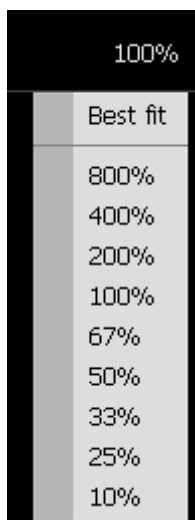
Now choose the Polygon tool for the inside selection:



Step-by-Step, click and drag the outline along the inside border of the lion—that is, where the edge of his fur meets the background. Once again, this process does not need to be carried out 100% accu-

CutOut 6 professional – Quick Start Guide

rately. In order to be able to work more precisely, however, you can use the Zoom function located on the left side of the Menu bar:



An alternative option is simply scrolling with your mouse wheel to adjust the zoom settings.

How do I move back a step?

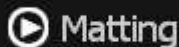
If indeed you click on the wrong spot, one right click will enable you to undo and replace the last point made with the Polygon tool.

Now finish up the outlining process so that your border spans the entirety of the object from the inside. Important is once again that the inside border does not contact the outside border area or the background itself. Finish up your selection with a double-click.

CutOut 6 professional – Quick Start Guide



Now you should see a green inside line and a blue outside line.



With one click of the Matting button on the right side of the menu, the object is cropped according to the inside and outside edge selections made in the previous step.

The result looks quite promising at first glance. The background has been removed and now appears transparent (gray/white grid-pattern):



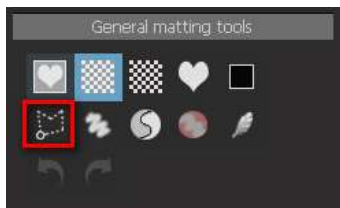
If your result still doesn't look absolutely perfect, you can improve the cropped object by using an array of additional tools located in the Inside/Outside Edge Matting Menu.

4. *Optimising Results*

Allocating Regions to the Foreground/Background

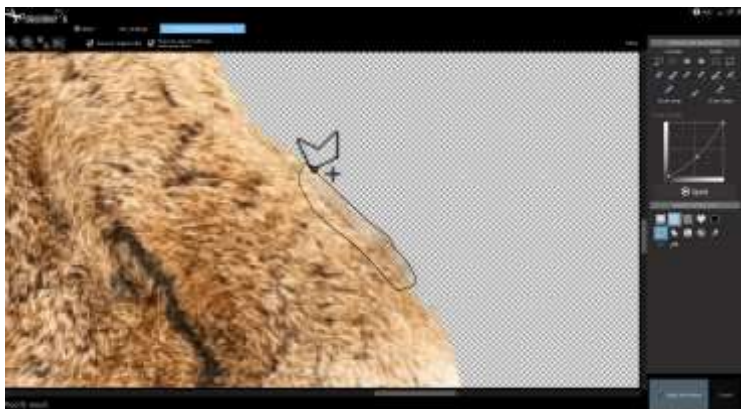
Polygon Tool

Matting tools in the second row will undoubtedly prove especially interesting and useful: The Polygon tool enables you to select and remove (or rather make transparent) any region of your processed image or bring already transparent sections of the image back to the foreground. By clicking the SHIFT-Button, you can bring these selected regions back into the foreground (“+” symbol located next to the Polygon-Tool). By not holding SHIFT, you can move the areas already in the foreground to the background (“-“ Symbol next to the Polygon-Tool). When using the Polygon tool and holding the CTRL-Key, you can freely select regions without having to use the Polygon tool selection functions.



By this means, we were able to remove the streaks from the image in our application example quickly and easily. For this we will be using the Polygon-Tool while making sure that the “+“-symbol appears next to the tool, given our aim is to add objects from the background to the foreground:

CutOut 6 professional – Quick Start Guide



With one double-click the selection process is finished and the selected area now shows a better result of the lion's fur edge.



In order to be able to work more precisely, you can magnify the section of the image you are working on by increasing the zoom on

CutOut 6 professional – Quick Start Guide

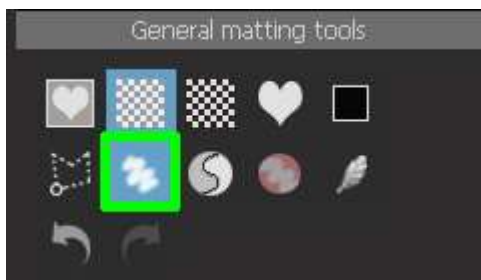
your mouse-wheel or on the zoom level next to the Matting-Menu on the left.

Bringing back objects or parts to the background you have to make sure that the “-”-symbol appears next to the Polygon-Tool (SHIFT-Key) when making your selection:



Free Paint Tool

The Free Paint tool in the Matting-Menu functions using a similar principle—that is, you simply select the areas you wish to edit with a brush instead of with the Polygon tool. The free paint tool is useful for generating smooth edges.



Select the Free Paint tool from the Menu and adjust the brush-settings near the top of the window:

CutOut 6 professional – Quick Start Guide



In this window you can adjust the brush size as well as the softness and the opacity. At a lower opacity level, selections will become half-transparent.



Same as with the Polygon-Tool, holding or not holding the SHIFT-key allows you to bring the transparent background back into the foreground or move visible objects to the background.

CutOut 6 professional – Quick Start Guide

In our example, you can remove the clouds by holding down the SHIFT-key while painting over them. When doing this, the “-”-symbol should appear next to the **Brush-Tool**.

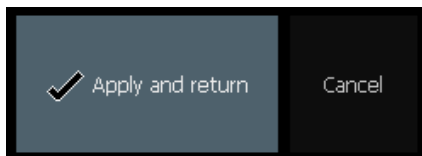
In this case, the opacity should be set to 100 since we do not just want to leave them partially transparent—we want them to disappear.

Regions already marked transparent can be brought back into the foreground by using the Painting-Tool on the “+” setting along with the ***Use Original Color*** function located next to the Brush-Setting window. The painted areas that are now transparent will turn back to their original color.

5. Applying Matting Results



To create an individual layer for our Matting result that will allow for it to be further edited and saved, click on the *Apply* button located in the Inside/Outside Edge Matting menu.

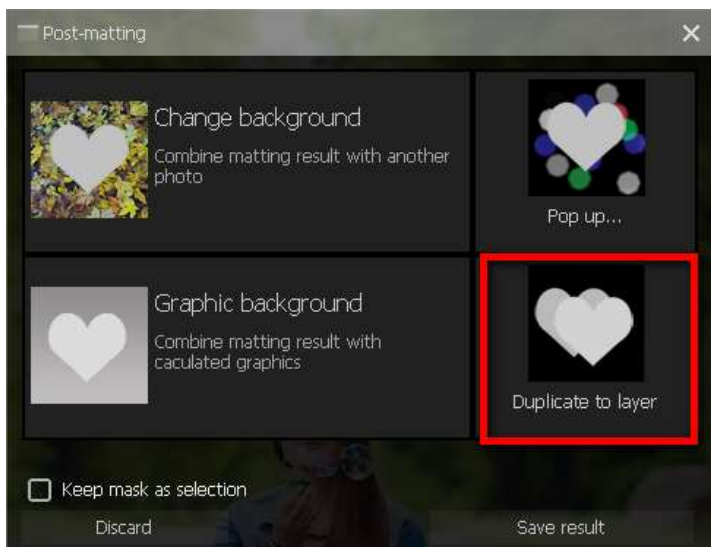


Following this, the Post Matting Menu will appear presenting you with an array of options of how you can proceed with the cropped object. To have your cropped object remain as its own layer, select the option *Duplicate Layer*.

In addition, you can also insert a new background into your project.

Simply click on “Change Background”

CutOut 6 professional – Quick Start Guide



The Matting result can now be found in the Drop-down Tab on the right side labeled *Layers*.

In order to be able to recognize your efforts and view the Matting result, you have to first hide the original picture containing the background. By simply clicking on the “eye symbol” located next to the layer:

CutOut 6 professional – Quick Start Guide



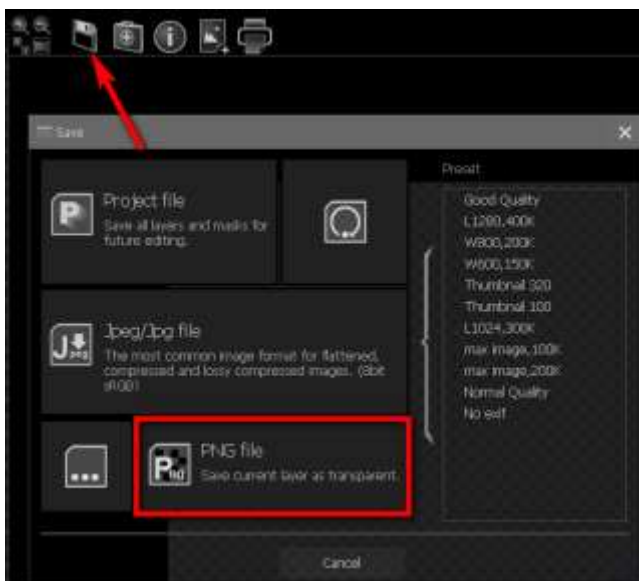
Now you have the option of either saving your work by clicking on the save symbol in the upper region of the image, or you can keep working on the image with the numerous effects and editing possibilities in Cutout 6 Pro.

When choosing the latter option, pay attention that you have chosen the correct Layer! In this case, the layer containing your Matting result must be chosen.

Mind that when saving your result, the file-save format PNG should be chosen in order to preserve the transparency information of the image.

You have now saved the lion onto a transparent background and can continue to use him in other programs with these same settings.

CutOut 6 professional – Quick Start Guide



Once again, quickly listed here are the most important steps in the selection of the inside and outside edges:

- Use the Polygon-tool in the selection of the inside and outside edge regions
- Click once to begin the selection
- One right-click of the mouse removes the previous point
- Moving and clicking of the mouse continues the selection
- Double-clicking ends the outline selection
- Use the mouse wheel to zoom in and out

6. *Changing the Background Image*

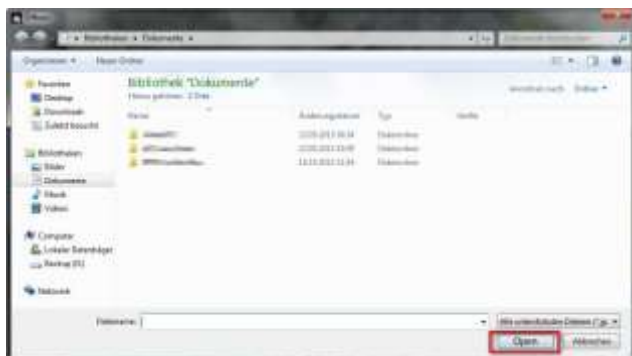
This image of a tiger in the wilderness will serve as our example image.



To relocate this tiger to a place with a rather cooler climate, we will choose the option *Change Background Image* in the Post-Matting Menu following the completed Matting process.

The File Browser should open from which the preferred alternate background image may be chosen for our tiger:

CutOut 6 professional – Quick Start Guide



Navigate your way to the new background image, select it and click *Open*.

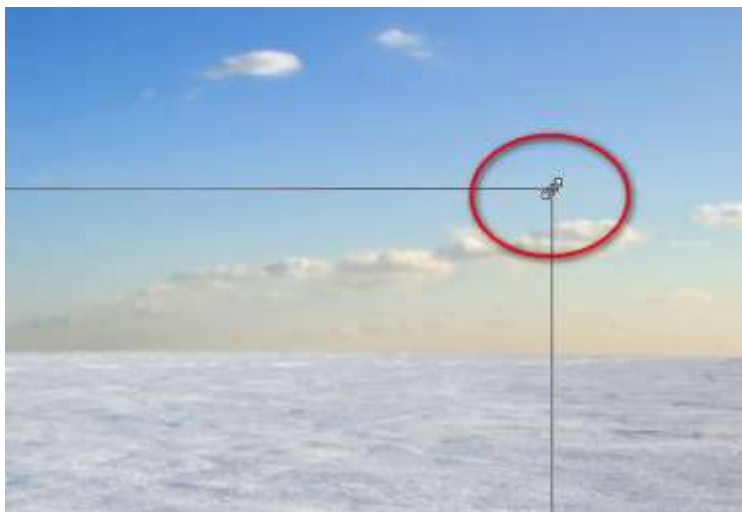
The cropped object will now appear in front of the new background image:



Clicking on the image while holding down the mouse button allows you to drag the object anywhere in the picture you would like.

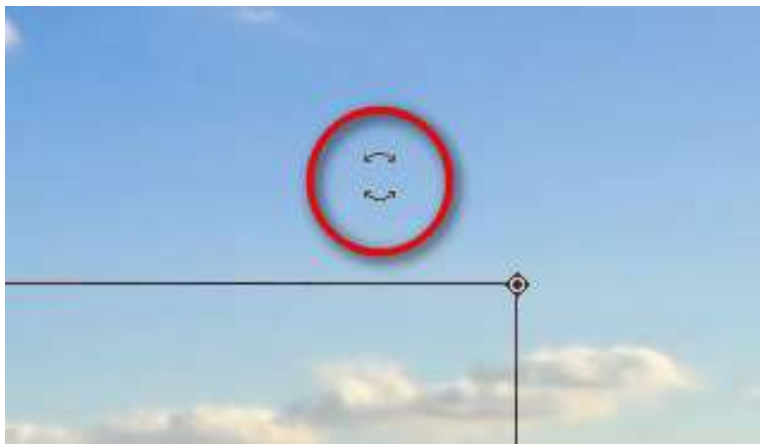
CutOut 6 professional – Quick Start Guide

Adjusting the object's placement in the image also reveals its edges, the arrows located in the corners let you increase or decrease the size of the image by dragging the mouse in the direction they are pointed.



Hold down on the left mouse button and move the mouse in order to adjust the size.

When you move your cursor outside of the edges of the image, the following symbol will appear:



Holding down the mouse button and moving it will allow you to rotate the object to any preferred angle. The tiger could thus theoretically be placed upside down.

When the size, angle and position of the object has been adjusted to your content, click on the “OK”-button in the middle of the screen:

CutOut 6 professional – Quick Start Guide



The adjusted image now appears in the main editing menu:



The tiger has now been reduced in size and relocated to the right of the image. The cropped image, or the tiger in front of the transparent background, is now available under the *layers* tab (see the red arrow in the picture). This means you can continue editing with the cropped object however you like until the best result is achieved.

CutOut 6 professional – Quick Start Guide

You can display the tiger without its background image by deactivating the background layer with one click of the “Eye-Symbol”:



7. Chromakey Matting



Methods used for cropping people or objects from images with monotone blue or green backgrounds.

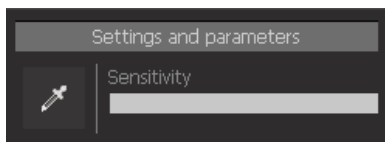
In order to crop objects with a solid green or blue background using Chromakey Matting, choose the image you wish to crop from Album Mode and select *Chroma-key* from



the drop-down menu tab to start off. The designated image should now appear in the Chromakey Matting Menu:

CutOut 6 professional – Quick Start Guide

On the right side of the screen you will find various Matting settings that will help to enhance your result. In order to begin cropping this table tennis player from the image, or, to extract the green background, click first on the pipette symbol:



Following this, click on one area of the image with a corresponding color to that of the background, in this case any green area. By using the Pipette tool like this, you are sending Cutout 6 Pro Information about the background color scheme. Cutout 6 Pro automatically recognizes which areas of the image need to be extracted and which should be kept.

The result will appear automatically with the (removed) background displayed transparently (gray/white grid-pattern):



CutOut 6 professional – Quick Start Guide

Since the green background of this image differs noticeably from the object (the table tennis player), the Matting result has turned out quite ideal and shows little need for further improvements. However, more often than not, the background is not as clearly defined, thus leading to the need for additional improvements to the Matting result following the first round of edits.

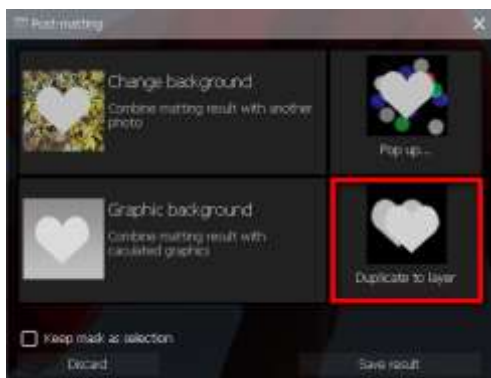
To read more about this step as well as the various tools included in the Chromakey Menu, please continue to the chapter *Chromakey Matting Optimization*.

To now designate the Matting result as its own layer for further editing purposes, simply click on *Apply* in the Chromakey Matting Menu.



As a result, the Post-Matting Menu will present you with an array of options on how you can proceed with the cropped object. To have your cropped object remain as its own layer, please select the option *Duplicate Layer*. Further explanations regarding the remaining Menu options can be found in the chapter titled *The Post Matting Menu*.

CutOut 6 professional – Quick Start Guide



The Matting result can now be found in the drop-down Tab on the right side labeled *Layers*. In order to be able to recognize your efforts and view the Matting result, you have to first hide the original picture containing the background. Simply click on the eye symbol located next to the Layer:



Now you have the option of either saving your work by clicking on the save symbol in the upper region of the image, or you can keep working on the image with the numerous effects and editing possibilities Cutout 6 Pro has to offer. When proceeding to the editing stage, make sure to select the correct layer, in this case—the Matting-result.

Please keep in mind that your project should be saved in PNG format in order to retain its transparency information.

CutOut 6 professional – Quick Start Guide

Note: This Chapter should serve as a simple introduction into object cropping using Chromakey Matting.

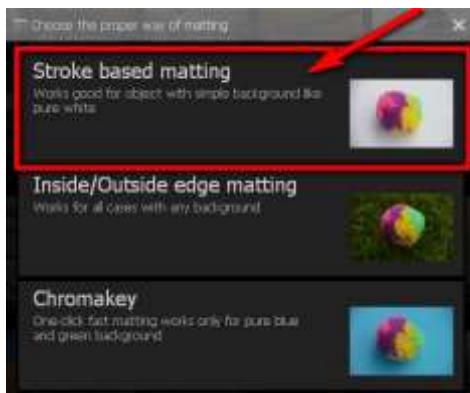


8. *Cropping using Object Contours*

This method allows you to crop images possessing white, gray or black backgrounds. It can also be used to remove regions inside objects belonging to the background.

First Application Example — Cropping Objects on White Surfaces

Select your image from Album Mode and click the option labeled “Cut Out” in the menu bar.



CutOut 6 professional – Quick Start Guide



Section containing calculated segments



The image has now been segmented into separate sections according to brightness level, edges and coloration. Click on the white background to crop the object.

CutOut 6 professional – Quick Start Guide



The object is now perfectly cropped. The designated region shows a green and the background a blue tint. By click on the “Matting” button the background is removed. Following this, click *Apply* and choose a new background for your object.

CutOut 6 professional – Quick Start Guide

Hotline/Support

Contact the **FRANZIS Customer Service Team** for questions about installation, problems or disruptions concerning this software product.

E-Mail: support@franzis.de

Telephone (Monday - Friday 12-18:00): +49 (0)180 30 02 644
(0,09 EUR per Minute from German Landlines, mobile rates may vary)

Telefax: 0180 300 26 45 (0,09 EUR per Minute from German Landlines, mobile rates may vary)

Please bear in mind that your inquiries can only be handled by the FRANZIS Customer Service Support Team. This is how we can continue to make lasting improvements in our service quality while answering your questions quickly and professionally.

Customer Service quick and easy:

Have important information concerning your PC system and product ready:

- Product Name
- Product-**ISBN-Number (These can be found on the back side of the product packaging located above the bar code).**
- Operating System of your PC
- Information about your PC's Configuration