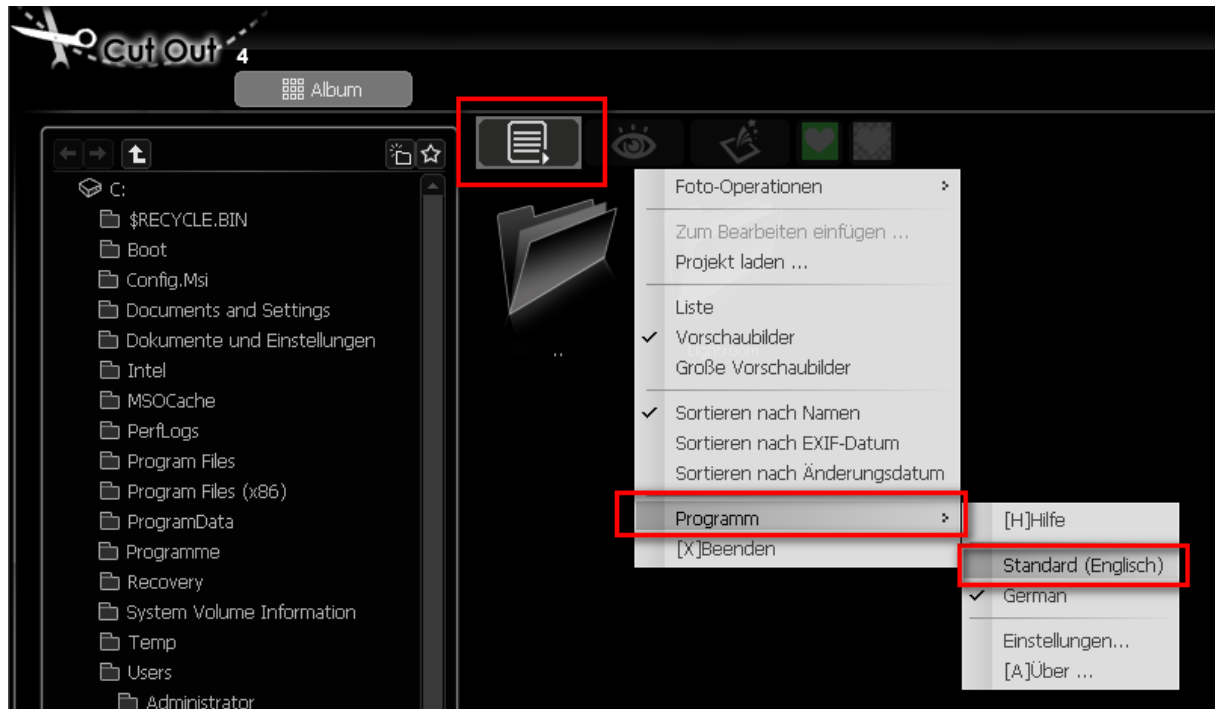
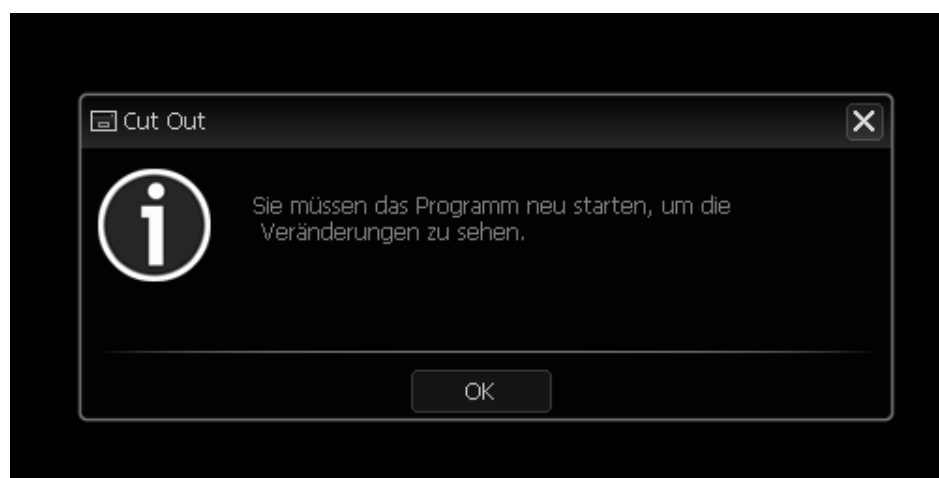


Switch language within CutOut 4

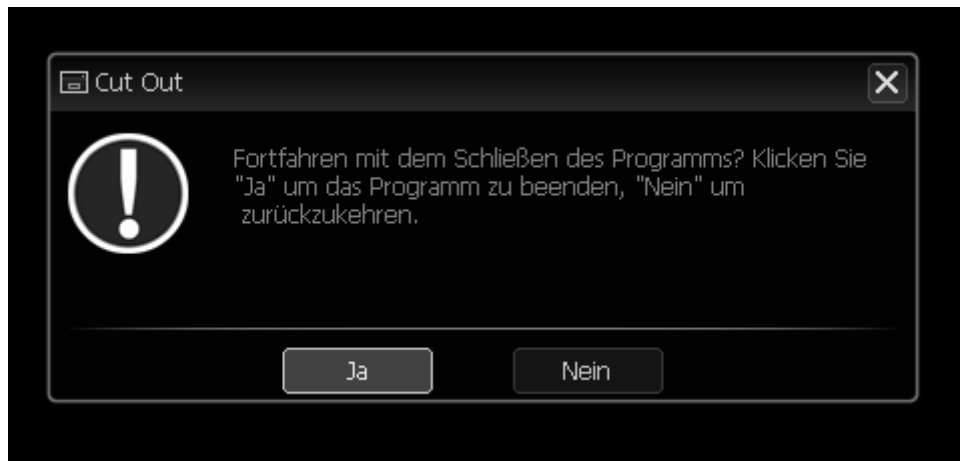
1. After completing installation, click on the menu icon and open the menu item "Programm". Please select "Standard (Englisch)".



2. The following message is confirmed with "OK".



3. Now a restart of the software is necessary. This is followed by a message. By clicking "Ja", CutOut 4 is closed.



After reopening CutOut, the user interface appears in English.